

Historic, Archive Document

Do not assume content reflects current scientific knowledge, policies, or practices.

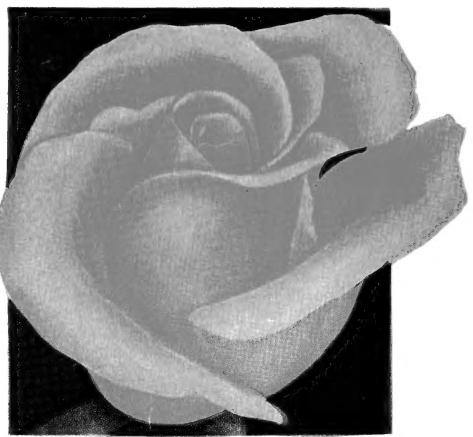
Barr's

LIBRARY
FEB 27 1943
U. S. Dept. of Agriculture

1893 — 50th ANNIVERSARY — 1943



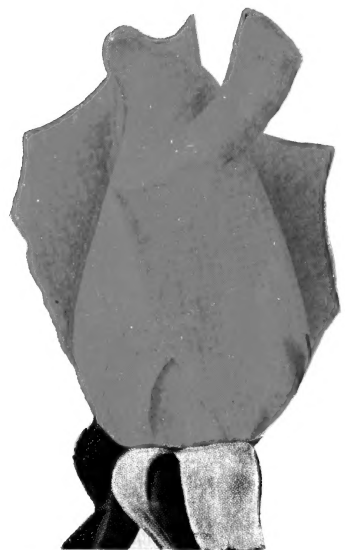
PRESIDENT MACIA. \$1.25 each; 3 for \$3.15



SISTER THERESE. \$1.00 each; 3 for \$2.50



CRIMSON
GLORY.
Pat. 105
\$1.25 each;
3 for \$3.15



CHARLOTTE ARMSTRONG. Pat. 455
\$1.50 each; 3 for \$3.75

FLOWER SHOP
116 N. QUEEN STREET

NURSERIES
R. D. I. MARIETTA PIKE

LANCASTER, PENNA.

GORGEOUS, FREE-FLOWERING, TESTED STANDARD

HYBRID TEA ROSES

(MONTHLY OR EVERBLOOMING VARIETIES)

Better Times. Pat. 23. Flowers large, double, deliciously fragrant; brilliant cerise-red; long, strong stems; buds long. \$1.00 each; 3 for \$2.50.

Charles K. Douglas. Bright crimson-scarlet; slightly fragrant. Healthy, active grower. 85c each; 3 for \$2.15.

Charlotte Armstrong. Pat. 455. Blood-red pointed buds; magnificent, long-stemmed, open flower, cerise in summer heat; richly fragrant. Very prolific and a continuous bloomer. Disease-resistant foliage. An All-America Rose. (Illustrated in color.) \$1.50 each; 3 for \$3.75.

Christopher Stone. Scarlet-crimson, well sustained; vividly colored new Rose with old-Rose perfume. (Illustrated in color.) \$1.00 each; 3 for \$2.50.

Condesa de Sagastog. Two-toned; coppery red inside, golden yellow outside; delightfully fragrant. Free-blooming, vigorous variety. \$1.00 each; 3 for \$2.50.

Countess Vandal. Pat. 38. Lovely coppery pink and golden, extra-long, pointed buds. A continuous "movie" developing new beauty at all times during its long life. (Illustrated in color.) \$1.00 each; 3 for \$2.50.

Crimson Glory. Pat. 105. Large urn-shaped buds opening into well-formed flowers of intense deep vivid crimson, shaded oxblood-red; soft, velvety nap. (Illustrated in color.) \$1.25 each; 3 for \$3.15.

Dicksons Red. Pat. 376. Glowing scarlet-red, rich in fragrance. Very rugged, defying hottest sun's rays. Awarded Gold Medal by National Rose Society of England 1939, and First Award "All-America Rose Selections." \$1.25 each; 3 for \$3.15.

Dorothy James. A large, two-toned Rose. It opens from an ovoid carmine-rose bud to a great 50-petaled bloom of soft peach-pink. A dependable all-summer bloomer. Disease-resistant foliage. \$1.25 each.

Eclipse. Pat. 172. International sensation; awarded prizes in Rome, Paris, etc. Long stream-lined buds are rich gold without shading. Strong upright plant with healthy dark green foliage. Gold Medal winner. (Illustrated in color.) \$1.25 each; 3 for \$3.15.

Edith Nellie Perkins. Long-pointed, rich orange-pink buds, opening salmon-pink with golden underglow; very fragrant. 85c each; 3 for \$2.15.

Editor McFarland. Deep pink. Flowers large, on long stems. Vigorous grower. \$1.00 each; 3 for \$2.50.

Etoile de Hollande. Brilliant scarlet, fragrant flowers of large size, a constant joy as it is a continuous bloomer. One of the best reds. 85c each; 3 for \$2.15.

Feu Pernet-Ducher. Pat. 103. Bright yellow with edges lightly flushed pink; extra large, fully double, delightfully fragrant. Continuous bloomer; tall, bushy, vigorous grower; robust habit. \$1.00 each; 3 for \$2.50.

Gloaming. Pat. 137. Large urn-shaped buds on long stems. Ideal for cutting. Flowers soft, satiny pink, with underlying shades of orange. Fragrant. \$1.25 each; 3 for \$3.15.

Good News. Pat. 426. Splendid, strong-growing, healthy plants with a profusion of nicely formed blooms of lovely peach-color with silvery pink outer petals. The most important of all the new Roses. Fragrant. (Illustrated in color.) 60 petals. \$1.50 each; 3 for \$3.75.

Joanna Hill. Indian-yellow center surrounded by gold-buff petals; double, long lasting, moderately fragrant. 85c each; 3 for \$2.15.

Kaiserin Auguste Viktoria. Creamy white, large blooms on long stems; fragrant; constant, majestic bloomer. 85c each; 3 for \$2.15.

Margaret McGredy. Brilliant red petals on hinges of deep gold; buds upright; constant bloomer. Resistant to black-spot and mildew. Gold Medal winner. \$1.00 each; 3 for \$2.50.

Mary Margaret McBride. Pat. 537. This new Rose is particularly admired for its perfect form and floral grace. Pointed, deep pink buds; large, very double, high-centered, fragrant, exhibition flower. Vigorous grower. 1943 All-America Award. \$1.50 each.

Matador. Pat. 170. Large, full Rose, with the scarlet-crimson sheen of the matador's cape, with darker silky sheen on the reverse; very fragrant. \$1.25 each; 3 for \$3.15.

McGregdy's Scarlet. Rich, velvety scarlet with orange base. Fragrant, full, double flowers of good size. Free blooming. \$1.00 each; 3 for \$2.50.

McGregdy's Sunset. Pat. 317. A beautifully formed flower with golden yellow tones, blushed with delicate orange and rich scarlet. Resistant to sun, hot weather, and disease. \$1.25 each.

McGregdy's Yellow. Bright buttercup-yellow flowers, perfectly formed; undamaged by rains. Strong upright grower. Disease-resistant, glossy, dark bronzy foliage. 85c each; 3 for \$2.15.

Mme. Cochet-Cochet. Pat. 129. Soft salmon-pink with satiny sheen; buds long-pointed, coppery pink, flushed orange; fragrant. (Illustrated in color.) \$1.00 each; 3 for \$2.50.

Mme. Jules Bouche. Full, pearly white, camellia-like flower, tinged bluish. Most dependable. 85c each; 3 for \$2.15.





© KING MIDAS. Pat. applied for
\$1.50 each; 3 for \$3.75

Mrs. Henry Morse. Two-tone. Petals bright carmine outside, pink with silver shadings inside; large, double, fragrant. 85c each; 3 for \$2.15.

Mrs. Pierre S. du Pont. Most continuous-blooming yellow. Buds long pointed, rich reddish gold, almost orange in depths of petals. (Illustrated in color.) 85c each; 3 for \$2.15.

Mrs. Sam McGredy. Glistening scarlet-copper-orange; deep red shadings. Fine form, double; fragrant. Graceful long-pointed buds. Disease resistant. (Illustrated in color.) \$1.00 each; 3 for \$2.50.

Pink Dawn. Glistening deep rose, opening to lovely pink, tinted orange at base of petals; well-formed; double; fragrant. Vigorous and prolific. 85c each; 3 for \$2.15.

Poinsettia. Upright, Radiance-like plants with beautiful blooms of brilliant scarlet-red. They are fragrant and are close to perfection in form. One of the best of the new Roses. Fragrant. (Illustrated in color.) 28 petals. \$1.25 each; 3 for \$3.15.

President Herbert Hoover. Contrasting shades of maroon, orange and gold; continuous bloomer; exquisitely formed buds; strong stems. Three-time medal winner. (Illustrated in color.) 85c each; 3 for \$2.15.

President Macia. The loveliest, longest of all pink buds open to great billowy blooms nearly 6 inches across. The color is silvery pink inside and sparkling pink outside marked with heavy veins. Fragrant. (Illustrated in color.) 25 petals. \$1.25 each; 3 for \$3.15.

President Plumecocq. Bud coppery yellow; flower large, double, brilliant apricot. Continuous bloomer. \$1.00 each; 3 for \$2.50.

R. M. S. Queen Mary. Pat. 249. Rich, glowing salmon blended with an exquisite pure pink; orange base. Glorious combination of vivid shades; delicately perfumed. Awarded 4 Gold Medals and 3 First-Class Certificates in Europe and U. S. A. \$1.25 each; 3 for \$3.15.

Radiance. Beautiful light silvery pink go salmon-pink. A dependable pink; large and fragrant. 85c each; 3 for \$2.15.

Red Radiance. Beautiful deep red form of Radiance. 85c each; 3 for \$2.15.

Res Anderson. Pat. 335. Long-pointed, ivory buds; open rose is cream-white, several on each stem, in rapid succession; delicately fragrant. Handsome, dark green foliage, resistant to diseases. Gold Medal winner. \$1.25 each; 3 for \$3.15.

Rochester. Pat. 131. Golden yellow with carmine markings. Foliage disease-resistant; growth vigorous. Always in bloom. \$1.00 each; 3 for \$2.50.

Rome Glory. Pat. 304. Large crimson-red buds opening into full, well-formed fragrant cerise-red blooms; long lasting. More winter-hardy than most Hybrid Teas. (Illustrated in color.) \$1.25 each; 3 for \$3.15.

Roslyn. Full golden yellow bloom deeper in center with orange splashing on back of petals. Very free bloomer. Lustrous foliage. 85c each; 3 for \$2.15.

Signora. Pat. 201. Long bud of a warm burnt sienna with yellow base in brilliant contrast; double and fragrant. Prolific. \$1.00 each; 3 for \$2.50.

Sister Therese. Golden yellow, exquisite, long-pointed buds touched with orange-carmine. Vigorous, fine bloomer. (Illustrated in color.) \$1.00 each; 3 for \$2.50.

Souvenir de Claudius Pernet. Beautiful, pure sunflower-yellow, deeper in center; extraordinary yellow Rose. 85c each; 3 for \$2.15.

Souvenir de Mme. C. Chambard. Flashy deep rose-pink with golden glow at center; large; semi-double; fragrant. Vigorous, upright grower. 85c each; 3 for \$2.15.

Sterling. Pat. 21. Bright pink, splendidly formed; delightfully fragrant. Fine for cutting. (Illustrated in color.) \$1.00 each; 3 for \$2.50.

Talisman. Brilliant orange-red buds, opening a glowing golden yellow, tinted copper-red and orange-rose; large and fragrant. (Illustrated in color.) 85c each; 3 for \$2.15.

Texas Centennial. Pat. 162. Blood-red toning to cerise-red in center. A most striking red of unusual color. Unusually vigorous. 85c each; 3 for \$2.15.

White Briarcliff. Pat. 108. An absolutely pure white Hybrid Tea Rose. Vigorous, bushy plant. \$1.25 each; 3 for \$3.15.

HARDY CLIMBING ROSES

Useful for covering porches, trellises, arbors, fences, walls and banks, making a superb display of bloom. Prune after flowering.

American Pillar. Immense clusters of single, bright crimson flowers, with white eye. 85c each; 3 for \$2.15.

Blaze. Pat. 10. Scarlet-red flowers in great profusion; the everblooming Paul's Scarlet. \$1.00 each; 3 for \$2.50.

Climbing American Beauty. Rich carmine flowers, 3 to 4 inches across, in abundance. 85c each; 3 for \$2.15.

Doublons. Pat. 152. Clusters of large, cup-formed, saffron-yellow blooms, opening one after the other, thus prolonging the season. \$1.00 each; 3 for \$2.50.

Dr. J. H. Nicolas. Pat. 457. Sensational everblooming Climber. Fully double rose-pink blooms, 5 to 6 inches across, and 3 or 4 blooms on each long, strong stem; rich, enduring fragrance. Extremely hardy; resistant to rose ills. \$1.50 each.

Dr. W. Van Fleet. Long-pointed, deep pink buds opening a lighter shade of pink; large and fragrant. 85c each; 3 for \$2.15.

Golden Climber. Pat. 28. Golden yellow, Hybrid-Tea-type flower on long stems; buds pure golden yellow flecked with orange-scarlet. Glossy green foliage. Recurrent blooms throughout season. \$1.00 each; 3 for \$2.50.

King Midas. Pat. applied for. Longest-blooming, hardy yellow climbing Rose. Tight buds and lovely 4-inch Hybrid-Tea-like flowers in clusters 4 to 6 inches across on strong stems. Disease-resistant; hardy and vigorous grower. (Illustrated in color.) \$1.50 each; 3 for \$3.75.

Mary Wallace. Brilliant, warm pink; large and charming; early. \$1.00 each; 3 for \$2.50.

Mme. Gregoire Staechelin. Long-pointed crimson-buds, showing iridescent pearl-pink inside as they open; perfumed. 85c each; 3 for \$2.15.

New Dawn. Pat. 1. The everblooming Dr. W. Van Fleet with which it is identical except that it blooms throughout the Summer and Fall. \$1.50 each; 3 for \$3.75.

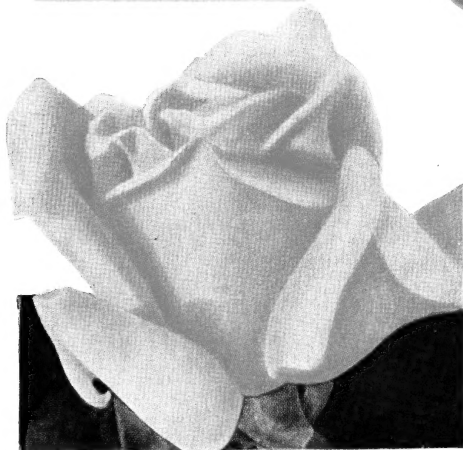
Paul's Scarlet Climber. Vivid scarlet, shaded crimson; semi-double flowers in clusters borne in profusion. 85c each; 3 for \$2.15.

**Gorgeous Gift Free
With Orders for
Dormant Roses**

With every cash order for Dormant Roses amounting to \$5.00 or more, received before March 10, we will include free

**1 FRAGRANT VIBURNUM
(Viburnum Carlesi)**

a worth-while recent plant novelty, valued at \$1.25, sometimes called Pink Snowball.



TALISMAN

85c each; 3 for \$2.15

←————→
*Special Discounts
on back page*
←————→

GOOD NEWS, Pat. 426
\$1.50 each; 3 for \$3.75

**BARR'S OFFERS Only Strongest-
Growing Roses Known**

Guaranteed to Bloom or Money Refunded

Varieties of Roses which we consider best for the average planter, considering strength of growth, freedom from disease and insects, abundance of large, beautiful blooms, will be found listed in this Catalog.

These are the cream of the several thousand varieties known to the flower industry. They include the most indispensable of the time-tested standard varieties and what we consider the best of the new, patented offerings.

You will have the fullest degree of pleasure in planting any of the varieties listed, for Barr's "Will Grow" Roses are guaranteed to grow and to bloom the first season, or will be replaced free.

Full planting and cultural directions furnished with each order

QUALITY ROSE PLANTS a Leading Specialty

ORDER EARLY to receive your plants in time to plant at the earliest date your soil is in condition to set them out.

SHIPPING CONDITIONS. We begin shipping dormant plants about March 10, weather permitting. If a preferred date of delivery is marked on your order you will be assured of receiving your plants when you want them; otherwise orders are filled in the same sequence as received.

FOR LATE PLANTING. After May 1 dormant plants are slow in starting and usually unsatisfactory. All orders are filled with established potted plants, shipping beginning about May 10. These plants are well in foliage and ready to bud and bloom, and sent to you at no extra cost other than they are sent via Express, transportation collect. If wanted by Parcel Post, add 15c per plant to cover packing and transportation. All dormant plants are sent Parcel Post prepaid.



MME. COCHET-COCHET, Pat. 129

\$1.00 each; 3 for \$2.50

Roses in color continued on page 31-32

50th Anniversary Edition

AFTER 50 YEARS of service in the Garden Spot and surrounding communities, I want to express, for my associates as well as myself an appreciation of the loyalty of our patrons. In this half-century we have grown along with our trees, our flowers and our plants—and with YOU—and in the words of the poet, we want to hope that “the best is still to be.”

SO WE MAKE A PLEDGE: a very simple pledge, but important: A pledge to maintain quality, service and material at reasonable prices just as in the past. This is the foundation on which we have grown and developed. We simply reassure you that your further transactions with us will always be completed to your entire satisfaction.

FIFTY YEARS AGO the beginnings were small! Very small! We purchased a small greenhouse plant at 950 Columbia avenue, Lancaster, Pa., to grow flowers for the wholesale trade. Two years later we opened a small retail flower shop. Then followed a move to larger quarters—and finally to our present well-equipped location in the heart of Lancaster at 116 North Queen. There for thirty-six years we have rendered a service that Lancaster's most discriminating users of flowers have appreciated.

WE PIONEERED ALSO in the Florist Telegraph Delivery Association—charter member in Lancaster and officer. In this work, as you know, thousands of orders for flowers are relayed and filled by 7,500 Florists, bonded members in the United States and Canada, and in other parts of the world, bringing cheer and a spiritual uplift in thousands of homes. All this is built up on the one word: Confidence.

THE NURSERY DEPARTMENT was originally started as a sideline at our then greenhouse plant, 950 Columbia Avenue, pioneering in ornamental plants in this vicinity for the home grounds, primarily for the accommodation of our patrons. It began in a small way—today it comprises 100 acres of rich, fertile soil along the Marietta pike (Lancaster R, 1), one mile from the county seat of Lancaster. Here you will find a complete assortment of roses, ornamental trees, evergreens, flowering plants, shrubs and fruit trees—tested for their quality, hardiness and value to the public for the local and shipping trade. Part of this acreage is now devoted to the production of food crops.

IT ALL SUMS UP TO THIS: We have grown greatly in size; our efficiencies have developed with the times; we are serving our patrons always a bit better each year—the only thing that hasn't changed is the fundamental policy of Quality and Fair Dealing.



B. F. Barr Flower Shop
116 N. Queen St.



Administration Building B. F. Barr Nurseries
Marietta Pike, R. D. 1. 1 Mile from Lanc.

THE VICTORY GARDEN PROGRAM is important not only for food production, but for the release of tension and for recreational and morale value so necessary in this time of great stress. The Government has been quick to realize this. It also realizes that ornamental gardening also has an important place.

Hon. Claude R. Wickard, Secretary of Agriculture, said at the National Victory Garden Conference: "I know there is a tremendous psychological value in having things to do in war times. Gardening is one activity that has great possibilities as a useful outlet for that urge to do something. There is a spiritual uplift in seeing things grow."

It seems to me the growing of flowers and plants has no small part in winning the war. We can and we will do without things that will provide material for defense, but never have the trees and flowers and shrubs of our gardens everywhere in the land had such a practical work to do, the work of restoring energy and the building of morale. Let us help introduce them into our lives and homes, and work as best we can to help win the war.

B. F. BARR

TERMS OF DELIVERY AND PAYMENT

GOVERNMENT CERTIFIED PLANTS

All plants are shipped anywhere under certificates from the U. S. Government and Pennsylvania Department of Agriculture, showing them to have been thoroughly inspected and found free from insects and fungus diseases.

Cash With Order

All Dormant Roses, Grass Seed and special offers prepaid. Perennials without a ball of earth on orders for \$3.00 or more are sent prepaid.

Potted Roses, Shrubs, Azaleas, Rhododendrons, Lilacs, Magnolias, Fruit Trees and other nursery items in this catalogue are packed free when cash accompanies the order; unless plants are mailable size or marked postpaid, they are sent by Railway Express or Freight, delivery charge collect.

If we are unable to make full shipment of your prepaid order, and you do not allow substitution, we will make prompt refund of your over-payment.

The right is reserved to advance prices without notice depending on market or other conditions beyond our control.

Safe Arrival Guaranteed. Please report any dissatisfaction immediately. During the peak of our shipping seasons, when we work day and night to fill thousands of orders, slight errors may occur which we are pleased to correct at once when called upon.

Responsibility. While we exercise the greatest care in filling orders, we cannot give any warranty, expressed or implied. We will replace such material as proved not true to name, but it is agreed at no time will we be responsible for more than the original purchase price.

Replacement. All stock accepted as satisfactory, properly planted and cared for, if failing to grow, dies from reasons beyond our or the customer's control. Such losses (except the delivery and planting) occurring the first growing season are shared fairly on a 50-50 basis. Hence, we agree to replace once at one-half the original purchase price, when purchased at regular catalogue prices and providing the customer has also shown good faith by having paid for the original plants in full. Customers should not expect plants to be replaced on the half price basis that have been winter killed or otherwise injured by dogs, or suffered any accident or neglect.

Local Truck Deliveries. Customers residing within 10 miles of our Nurseries may request truck delivery without charge on such days as we have full truck load deliveries in that particular section. Special deliveries, 15c a mile.

Truck Deliveries Outside of 10-mile area by special arrangement, depending on size of order and distance to point of delivery.



For the Best Garden you ever had,
Plant Barr's "Will Grow" Plants

CONTENTS

	Page
Broad Leaf Evergreens	14-15
Evergreens	16-17-18-19-20-21-22
Fertilizers and Accessories	26
Flowering Shrubs	10-11
Fruit Trees and Berries	8-9
Ground Covers and Vines	28
Hardy Garden Chrysanthemums	30
Hedge Plants	11
Insecticides	27
Introduction	5
Landscape Service	7
Lawn Grass Seed	29
Lilacs	28
Perennials	12-13
Rose Plants	1-2-3-4-31-32
Trees, Ornamental	23-24-25
Terms of Delivery and Payment	6

Proper Plant Materials Greatly Accent the Beauty of any Home---Modest or Pretentious



The Photograph Above Illustrates Most Impressively the Value of Combining Evergreens, Trees and Shrubs in a Harmonious Planting

Here the beauty of the home is not hidden but rather enhanced by its complete and beautiful setting of well-selected plant materials properly arranged.

What otherwise would be monotonous formality is effectively broken by the planting of Dwarf Evergreens under the windows, with taller varieties against bare walls, giving an atmosphere of warmth in Winter and coolness in Summer.

The trees in their beauty of irregular form give added grace, and at the same time furnish shade in the heat of Summer. Groupings of Shrubs offer a continuous bloom as a joy from frost to frost.

The drive is screened from the entrance view, and a setting of Evergreens prevents objectionable views from the rear of the house or service yard.

Completing the picture is the Barberry Hedge planted along the front and sides, rich in the brilliance of its colorful leaves and berries in the Fall.

PRACTICAL LANDSCAPE SERVICE FOR PROSPECTIVE PLANTERS

We are prepared to offer landscape advice, furnish sketches and planting suggestions free of charge for any type of property. If difficult problems vex you come and talk them over with us or send them in by mail for our solution.

Make a sketch of your grounds. If you accurately furnish all the various measurements it will not be necessary that you even attempt to draw the sketch to scale.

Indicate in figures the width and length of all buildings in feet; width and length of porches and any offsets; distance to boundary lines in all directions; location of basement windows; height of foundations and porch; locate principal windows; show position of kitchen; locate and name Trees and Shrubbery now on property.

Show also direction house faces (whether north or south, east or west), terraces or grades of any importance, location of walks and driveways with widths of same and of ground on both sides, any objectionable views to be hidden and vistas to be retained. Please send photograph of property, if possible.

State whether you want Evergreens or Shrubs for foundation planting; if you have any preference in varieties to be included anywhere; when you contemplate planting; about how much you wish to expend for plants, so we can suggest a planting that will be in keeping with your individual requirements and wishes, and that will be practical for your grounds by flourishing under the very conditions existing thereon and in complete harmony with the entire environment.

For large operations requiring surveying and much detail work, a charge to cover the actual cost for making plans, traveling expenses, etc., will be made. The home to be loved must be made lovely.

Fruit Producing Plants For Victory Gardens

ASPARAGUS

Mary Washington. 2 yr. Select No. 1 roots. 10 for 60c; \$3.00 per 100; \$20.00 per 1000.

✓ BLACKBERRY

Blowers. A hardy, productive variety. Large fruit, black and sweet. 10 for \$1.25

✓ CURRANT

Perfection. A large red variety. 2-year, strong healthy plants. 3 for \$1.00; \$3.00 per 10.

✓ GRAPE VINES

In planting Grapes dig the hole as big as though planting an apple tree and prune severely.

Black

Campbell's Early. One of the largest fruiting Grapes and extremely satisfactory.

Concord. The well-known black Grape. Can always be depended on to fruit heavily.

Worden. Bunch large and compact. Good, large berries and an early fruiting variety.

Red and Purple

Catawba. A very nice berry, having an unusually sweet and aromatic flesh.

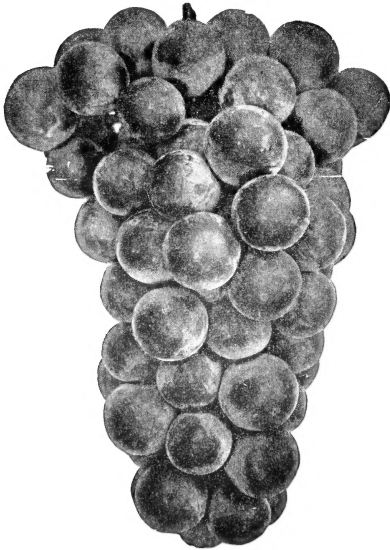
Delaware. The well-known small, very sweet red Grape. Comes in small bunches.

Salem. Berries larger than Catawba, flesh tender, juicy and sweet.

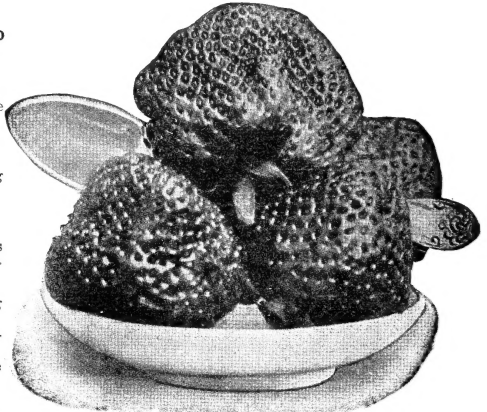
White

Niagara. Sweet and juicy, large, round berries, long, compact, heavy bunches; best white.

Selected, strong 2 yr. Grape Vines, 3 for \$1.20; \$3.00 per 10 your selection.



PLANT GRAPES IN YOUR GARDEN



STRAWBERRIES Make A Tempting Dish

✓ GOOSEBERRY

Downing. Light green. Houghton. Pale red. Strong 2 yr. plants, 3 for \$1.20; \$3.00 per 10.

✓ RASPBERRY

Raspberry plants, and Blackberries as well, should be planted 3 feet apart in rows that are 5 to 6 feet apart, and pruned back heavily.

Cumberland. Well-known black-cap. Fruit large Cuthbert. Hardy; sweet; productive. Deep crimson.

Latham. Large, round, brilliant red; heavy yielding. Mosaic free and hardy.

Strong plants, 3 for 75c; \$1.50 per 10 your selection.

Boysenberry. The largest berry ever developed. 3 for 90c; \$1.75 per 10.

RHUBARB

Strong, 2 yr. roots, 3 for \$1.00; \$2.50 per 10.

✓ STRAWBERRIES

Strawberries will grow in any good garden soil. Plant 1 foot apart in rows 3 to 4 feet apart.

Big Joe (Perfect). Vigorous grower and very productive. Berries large, conical shape, rich red, excellent flavor. Best mid-season variety.

Chesapeake (Perfect). Large, firm, glossy berries of delicious flavor. Best late variety.

Dorsett (Perfect). New variety with heavy yielding qualities; light colored; delicious flavor. Early.

Fairfax (Perfect) Firm berry of wonderful flavor and high dessert qualities. Very early.

Premiere (Perfect). Glossy rich red color extending clear through. Deliciously flavored. Immensely productive. Best very early.

Strong layer plants, 10 for 35c; 25 for 65c; \$2.00 per 100; \$15.00 per 1000 of your selection.

EVERBEARING STRAWBERRIES

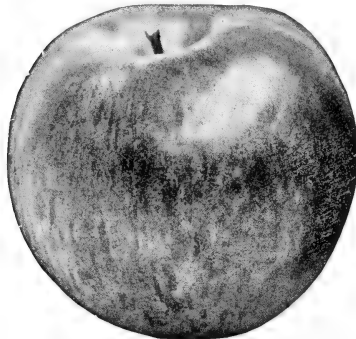
Mastodon. Large fruiting and most prolific, bearing continuously June to frost; good flavor.

10 for 75c; 25 for \$1.25; \$3.50 per 100.

Plant Fruit For Food And Beauty

Barr's "Will Grow" Fruit Trees are the largest sizes that can be planted to best advantage, are straight trunked, true to name and are not to be compared with customary small sizes frequently offered. They will transplant successfully, make good growth, and give an early and abundant yield. Plant cherry tree tap-root straight down.

Heavy, No. 1 grade, selected trees, note large caliper (trunk diameter) supplied.



STAYMAN'S WINESAP APPLE

STANDARD APPLE

(D) Dessert variety; (C) Cooking variety.

Baldwin. Large; bright red; rich juicy. Winter. (DC).

Grimes' Golden Pippin. Medium. Sub-acid. Winter. (DC).

Jonathan. Brilliant red; highly flavored. Winter. (DC).

McIntosh. Medium to large; deep red. Winter. (DC).

Northern Spy. Medium to large; red striped. Sub-acid. Winter. (DC).

Rambo. Large; yellow; rich and of good flavor. Autumn. (DC).

Red Astrachan. Greenish-yellow with red stripes, often nearly all red. Autumn. (DC).

Red Delicious. Large; red striped. Winter. (D).

Rome Beauty. Large; juicy; mottled and striped different shades of red. Good baking apple. Winter. (C).

Smokehouse. Medium; red striped. Sub-acid. Winter. (DC).

Stayman's Winesap. Medium, bright red. Winter. (DC).

Wealthy. Red of good quality; good keeper. Acid. Autumn. (DC).

Yellow Delicious. Large; clear, bright yellow. Winter. (DC).

Yellow Transparent. Pale yellow. Sub-acid. Summer. (DC).

York Imperial. Medium yellow, shaded red. Acid. Winter (C).

Extra large, 2 yr., 5 to 6 ft., $\frac{3}{4}$ -1 in. cal., 90c each; \$3.50 per 10; your selection.

CRAB-APPLE

Transcendent. Medium, golden yellow, crimson cheek. September. Strong, stocky trees.

2 yr., $\frac{3}{4}$ -1 cal., \$1.00 ea.; \$8.50 per 10.

APRICOT

Moorpark. Large, deep orange. Rich. August. 2 yr., 4-5 ft., $\frac{3}{4}$ -1 in. cal., \$1.25 ea.; \$11.00 per 10.

SOUR CHERRY

Early Richmond. Medium, deep red, rich, acid. Mid-June.

English Morello. Large, deep red, pleasant, acid. Late July.

Montmorency. Large, bright red; pleasing acid flavor. June.

2 yr., 3 to 5 ft., $\frac{3}{4}$ -1 in. cal., \$1.10 ea.; \$10.00 per 10 of your selection.

SWEET CHERRY

Black Tartarian. Very large, purplish-black, rich. June.

Governor Wood. Large, yellow, shaded red, June.

Napoleon Bigarreau. Large, yellow-red, excellent. July.

Rockport. Large, red, pleasant and rich. June.

Schmidt's Bigarreau. Large, red, rich and pleasant. July.

Windsor (Oxheart). Large, liver-color, rich. July.

Yellow Spanish. Very large, yellow, red cheek, sweet. Last of June.

2 yr., 5 to 6 ft., $\frac{3}{4}$ -1 in. cal., \$1.35 ea.; \$12.00 per 10 of your selection.

PEACH

Belle of Georgia. White with red cheek; excellent flavor. Early September.

Champion. Very large; white; red cheek, delicious. Late September.

Crawford's Early. Medium; yellow. July.

Crawford's Late. Very large; yellow; red cheek. Late September.

Elberta. Very large, yellow; red cheek, juicy, rich. Middle of August.

Golden Jubilee. Large; yellow; freestone. Middle of August.

J. H. Hale. Very large; yellow. Late August.

Yellow St. John. Large; yellow; sweet. July.

1 yr., 4 to 5 ft., $\frac{5}{8}$ - $\frac{7}{8}$ in. cal., 60c ea.; \$5.00 per 10 of your selection.

PEAR

Bartlett. Large, clear yellow; aromatic. Autumn, juicy. Autumn.

Duchess d'Agnouleme. Large, greenish yellow, juicy. Autumn.

Kieffer. Large, golden yellow, sweet. Winter.

Seckel. Small, yellowish russet; spicy. Autumn. 2 yr., 5 to 6 ft., $\frac{3}{4}$ -1 in. cal., \$1.10 ea.; \$10.00 per 10 of your selection.

PLUM

Burbank. Large; cherry-red; sweet. Last of August.

German Prune. Large; purple; sweet. September.

Reine Claude. Large, green gage; excellent. Late September.

Satsuna. (Blood Plum). Large; purplish-red; juicy. Mid-July.

Yellow Egg. Large, oval, yellow; juicy. September.

2 yr., 5 to 6 ft., $\frac{3}{4}$ -1 in. cal., \$1.25 ea.; \$11.00 per 10.

QUINCE

Orange. Large and prolific; orange-yellow; delightfully fragrant. Early.

1 yr., 4 to 5 ft., $\frac{5}{8}$ - $\frac{7}{8}$ in. cal., \$1.25 ea.; \$11.00 per 10.

Flowering Shrubs For Any Purpose

Shrubs are the "decorative furnishings" for the home grounds, and without this important feature no home grounds can be complete. In the diversity of their foliage and bloom the possibilities of a shrub planting are practically unlimited.

"Will Grow" Shrubs are sturdy, well-rooted plants with a bushy top of numerous branches. They have been nurtured long enough in our nurseries to gain size and vigor, so that they will prove particularly dependable and desirable.

How to Plant Shrubs to Obtain Best Results

Cut the tops back about one-half or one-third before planting. Be careful not to have roots exposed to air or sun at any time.

The important point in planting is to have the hole large enough to accommodate the roots without crowding, and to get the soil well worked in among the roots. Space the larger growing Shrubs 4-5 ft., apart, medium growers, 3-4 ft., low growers, 2-3 ft.

After planting always water abundantly and apply a mulch to serve as a protective covering.

Selection of Shrubs for Every Purpose Made Easy

VARIETIES, SIZES, PRICES		Low Growing.	Medium Growing.	Tall Growing.	Spring Flowering.	Summer and Fall Flowering.	White Flowering.	Red or Pink Flowering.	Berry and Autumn Foliage Effects.	For Part Shade.
Additional sizes in varieties listed, or other varieties desired, will be gladly quoted on request.										
Deduct 10% Discount on Flowering Shrubs when 5 or more plants of one kind are ordered express collect.										
VARIETIES	SIZES AND PRICES									
<i>Aralia pentaphyllum</i> —Five-leaved Angelica	3-4 ft. \$.75	4-5 ft. \$1.00								
<i>Aronia arbutifolia</i> —Red Chokeberry	1½-2 ft. .75	2-3 ft. 1.00								
<i>melanocarpa</i> —Black Chokeberry		2-2½ ft. .75								
<i>Asalea calendulacea</i> —Flame Azalea (yellow)	3-4 ft. 3.00									
<i>Berberis thunbergii</i> —Japanese Barberry		See Page 11								
<i>Callicarpa purpurea</i> —Beauty Fruit (violet)	2-2½ ft. .75									
<i>Calycanthus floridus</i> —Sweetshrub (purple)	15-18 in., 3-yr. plant (potted)	2½ ft. 1.00								
<i>Caryopteris incana</i> —Bluebeard (lavender), 15-18 in., 3-yr. plant (potted)		.75								
<i>Chionanthus virginica</i> —White Fringe Tree	3-4 ft. 1.50									
<i>Clethra alnifolia</i> —Summersweet	18-24 in. .75									
<i>Colutea arborescens</i> —Bladder Senna (yellow)	3-4 ft. .75									
<i>Cornus paniculata</i> —Gray Dogwood	2½-3 ft. .75	3-4 ft. 1.00								
<i>stolonifera</i> —Red Osier Dogwood	2½-3 ft. .75	3-4 ft. 1.00								
<i>lutea</i> —Golden Twig Dogwood	2½-3 ft. .75	3-4 ft. 1.00								
<i>Cydonia japonica</i> —Flowering Quince	1½-2 ft. .75	2-3 ft. 1.25								
<i>Deutzia gracilis</i> —Slender Deutzia	12-15 in. .75	12-15 in. .75								
<i>rosea</i> —Slender Pink Deutzia		18-24 in. 1.00								
<i>leinoinei</i> —Lemoine Deutzia	12-15 in. .75	18-24 in. .75								
<i>s. candidissima</i> —Snowflake Deutzia	18-24 in. .75	3-4 ft. 1.00								
<i>s. crenata</i> —Double Pink Deutzia	18-24 in. .75	3-4 ft. 1.00								
<i>Euonymus alatus</i> —Winged Euonymus	3-4 ft. 1.00	4-5 ft. 2.00								
<i>compactus</i> —Dwarf Winged Euonymus	15-18 in. 1.00	18-24 in. 1.50								
<i>americanus</i> —Brook Euonymus	2-3 ft. .75	2-3 ft. .75								
<i>Forsythia fortunei</i> —Golden Bell (yellow)	2-3 ft. .75	4-5 ft. 1.00								
<i>intermedia</i> —Border Forsythia (yellow)	2-3 ft. .75	4-5 ft. 1.00								
<i>suspensa</i> —Weeping Forsythia (yellow)	2-3 ft. .75	4-5 ft. 1.00								
<i>viridissima</i> —Green-stem Forsythia (yellow)	2-3 ft. .75	4-5 ft. 1.00								
<i>Hibiscus syr.</i> —Shrub Althea—Rose of Sharon (red, white, pink)	3-4 ft. 1.00	3-4 ft. 1.00								
<i>Hydrangea arb. grand.</i> —Snowhill Hydrangea	1½-2 ft. .75	2-2½ ft. 1.00								
<i>opuloides otakusa</i> —Otaka Hydrangea, 3-yr. potted plants	15-18 in. 2.00									
<i>pan. grand.</i> —Peenoe Hydrangea	2½-3 ft. .75	3-4 ft. 1.00								
<i>Jasminum nudiflorum</i> —Winter Jasmine (yellow)	1½-2 ft. .75									
<i>Kerria japonica</i> —Globe Flower (yellow)	2½-3 ft. .75	3-4 ft. 1.00								
<i>Kolkwitzia</i> —"Beauty Bush"	3-4 ft. 1.00	3-4 ft. 1.00								
<i>Lonicera bella alba</i> —White Belle Honeysuckle	2-3 ft. .75	3-4 ft. 1.00								
<i>frag.</i> —Winter Honeysuckle	3-4 ft. .75	4-5 ft. 1.00								
<i>morrow</i> —Morrow Honeysuckle	3-4 ft. .75	4-5 ft. 1.00								
<i>tatarica</i> —Tartarian Honeysuckle	3-4 ft. .75	4-5 ft. 1.00								
<i>tat. rosea</i> —Honeysuckle	3-4 ft. .75	4-5 ft. 1.00								
<i>Myrica Gale</i> —Sweet Gale (Bayberry)	12-15 in. .60	15-18 in. 1.00								
<i>Philadelphus coronarius</i> —Sweet Mock Orange	3-4 ft. .75	4-5 ft. 1.00								
<i>grand.</i> —Big Scentless Mock Orange	3-4 ft. .75	4-5 ft. 1.00								
<i>leinoinei</i> —Lemoine Mock Orange	3-4 ft. .75	2-3 ft. 1.00								
<i>virginialis</i> —Virginal Mock Orange (new)	2-3 ft. 1.00	3-4 ft. 1.50								
<i>Prunus gland. alta. fl. pl.</i> —Flowering Almond White	1½-2 ft. 1.00									
<i>gland. fl. pl.</i> —Flowering Almond (pink)	1½-2 ft. 1.00									

What Others Say About Barr's "Will Grow" Evergreens

Conshohocken, Pa.

State College, Pa.

I received the evergreens yesterday. They were packed fine and carried in perfect condition. We planted them at once and they improve the appearance of our place already.

All plants we have received from your company have been perfectly satisfactory. We have growing on our lawn some very nice specimens of your Evergreens.

MRS. A. P.

F. H. S.

Selection of Shrubs for Every Purpose Made Easy (Continued)

VARIETIES, SIZES, PRICES				Low Growing.	Medium Growing.	Tall Growing.	Spring Flowering.	Summer and Fall Flowering.	White Flowering.	Red or Pink Flowering.	Berry and Autumn Foliage Effects	For Part Shade.
VARIETIES	SIZES AND PRICES											
<i>Rhodotypos kerrioides</i> —Jetbead	2-3 ft.	\$0.75	3-4 ft.	\$1.00	*	*	*	*	*	*	*	*
<i>Rhus cotinus</i> —Smoketree (Purple Fringe) (yellow)	3-4 ft.	↓.50	4-5 ft.	2.00	*	*	*	*	*	*	*	*
<i>Robinia hispida</i> —Rose Acacia			3-4 ft.	1.00	*	*	*	*	*	*	*	*
<i>Rosa hugonis</i> —Hugonis Rose (yellow)	2-3 ft.		2 yr.	.75	*	*	*	*	*	*	*	*
“ <i>rugosa</i> —Japanese Rose (red)			2-3 ft.	.75	*	*	*	*	*	*	*	*
<i>Sorbaria sorbifolia</i> —Ural False Spirea			3-4 ft.	.80	*	*	*	*	*	*	*	*
<i>Spirea trichocarpa</i> —Korean Spirea			2½-3 ft.	.50	*	*	*	*	*	*	*	*
“ <i>arguta</i> —Garland Spirea			1½-2 ft.	.60	*	*	*	*	*	*	*	*
“ <i>billiardi</i> —Billiard Spirea (pink)			3-4 ft.	.60	*	*	*	*	*	*	*	*
“ <i>bumalda a. w.</i> —Anthony Waterer Spirea (red)	1½-2 ft.	.60	2-2½ ft.	.85	*	*	*	*	*	*	*	*
“ <i>froebeli</i> —Froebel Spirea	2-3 ft.	.50	3-4 ft.	.75	*	*	*	*	*	*	*	*
“ <i>margaritae</i> —Margarita Spirea (pink)	2-3 ft.	.50	3-4 ft.	.75	*	*	*	*	*	*	*	*
<i>Spiraea prunifolia</i> fl. pi.—Birds Nest			3-4 ft.	.60	*	*	*	*	*	*	*	*
“ <i>van houttei</i> —Van Houtte Spirea	3-4 ft.	.50	4-5 ft.	.60	*	*	*	*	*	*	*	*
<i>Stephanandra flexuosa</i> —Cut-leaf Stephanandra			2-3 ft.	.75	*	*	*	*	*	*	*	*
<i>Symphoricarpos racemosus</i> —Snowberry	2-2½ ft.	.40	2½-3 ft.	.65	*	*	*	*	*	*	*	*
“ <i>vulgaris</i> —Coralberry	2-2½ ft.	.40	2½-3 ft.	.60	*	*	*	*	*	*	*	*
<i>Syringa chinensis</i> —Chinese Lilac (lavender and purple)			3-4 ft.	1.25	*	*	*	*	*	*	*	*
“ <i>josikaeo</i> —Hungarian Lilac (violet)			3-4 ft.	1.25	*	*	*	*	*	*	*	*
“ <i>persica</i> —Persian Lilac (lavender)	3-4 ft.	1.25	4-5 ft.	1.50	*	*	*	*	*	*	*	*
“ <i>villosa</i> —Late Lilac			4-4½ ft.	1.50	*	*	*	*	*	*	*	*
“ <i>vulgaris</i> —Blue Lilac (blue)			3-4 ft.	1.50	*	*	*	*	*	*	*	*
“ <i>vulg. alba</i> —White Lilac			3-4 ft.	1.50	*	*	*	*	*	*	*	*
(For French Lilacs, see Special Offer Page 28)												
<i>Tamarix africana</i> —Tamarix			3-4 ft.	.75	*	*	*	*	*	*	*	*
<i>Viburnum cassinoides</i> —Withe-rod	1½-2 ft.	.60	3-4 ft.	1.00	*	*	*	*	*	*	*	*
“ <i>carlesi</i> —Fragrant Viburnum	15-18 in.	1.50	2-2½ ft.	2.25	*	*	*	*	*	*	*	*
“ <i>dentatum</i> —Arrowwood			3-4 ft.	1.00	*	*	*	*	*	*	*	*
“ <i>lentago</i> —Nannyberry			3-4 ft.	1.00	*	*	*	*	*	*	*	*
“ <i>opulus</i> —European Cranberry bush	3-4 ft.	1.00	4-5 ft.	1.50	*	*	*	*	*	*	*	*
“ <i>op. sterile</i> —Common Snowball			3-4 ft.	1.00	*	*	*	*	*	*	*	*
“ <i>tomentosum</i> Double File Viburnum			3-4 ft.	1.25	*	*	*	*	*	*	*	*
“ <i>tom. plicatum</i> —Japanese Snowball			3-4 ft.	1.50	*	*	*	*	*	*	*	*
<i>Vitex Microphilla</i> —Chaste Bush (lavender)			3-4 ft.	.75	*	*	*	*	*	*	*	*
<i>Weigela rosea</i> —Rose Weigela			3-4 ft.	.75	*	*	*	*	*	*	*	*
“ <i>Eva Rathke</i> —Carmine Weigela			1½-2 ft.	.85	*	*	*	*	*	*	*	*
<i>Zanthorhiza</i> —Yellowroot (purple)					*	*	*	*	*	*	*	*

BARBERRY

BERBERIS thunbergii.	Green Barberry*
15-18 in., 3 yr. Transplants	Ea. 10 100
1½-2 ft., Heavy Transplants	.30 2.50 20.00
2-2½ ft. Heavy Transplants	.40 3.50 25.00
B. atropurpurea.	Red Barberry
15-18 in. bushy plants	Ea. 10 100
1½-2 ft. bushy plants	\$.35 \$3.00 \$25.00
1½-2 ft. bushy plants	.45 3.75 30.00
Buddleia.	Butterfly Bush
The vigorous fully established plant we prepare for you will bloom from mid-Summer until frost.	
B. Charming (Lavender-pink)	2 yr. plant 60c ea.
B. Ille de France (Claret-purple)	2 yr. plant, 60c ea.
B. Royal Red.	A new introduction last season. A must have, potted plants, 75c; 3 for \$2.00
One of each \$2.00 postpaid.	

HEDGE PLANTS

LIGUSTRUM Amur, 12-15 ft.	Amur Privet*
Hardy northern-grown type; dark foliage.	
2-3 ft.	Ea. 10 100
2-3 ft.	\$0.30 \$1.80 \$12.00
L. ibota, 8-10 ft.	Ibota Privet*
Remarkably sturdy and cold resistant.	
2-3 ft.	\$0.35 \$2.50 \$20.00
3-4 ft.	.55 4.50 35.00
L. i. regelianum, 5-6 ft.	Regal Privet*
Dense shrub, with low, horizontal branches; fragrant white flowers in June; attractive black berries. Splendid in foundation plantings.	
1½-2 ft.	\$0.60 \$5.00 \$40.00
2-3 ft.	.85 7.00 55.00
L. ovalifolium, 12-15 ft.	California Privet*
The most generally used hedge plant. Space six inches apart for a dense, full-to-the-ground hedge.	
1½-2 ft.	10 100
2-3 ft., 2-year	\$0.75 \$6.00
	.85 8.00

Nicholson, Pa.

Bradford, Pa.

The True Dwarf English Box arrived and I had them immediately planted. They were in excellent condition. Last evening I went up to see how they stood two hot days. They were fine. Both my husband and I are very pleased. There's nothing like it in our cemetery.

MRS. F. E. R.

Our spruce trees are growing wonderfully well, and are more beautiful than I ever dreamed they would be. In fact, they are the finest specimen of spruce trees in the city, and we naturally are very proud of them.

MRS. HUGH GRANT

HARDY PERENNIALS

The Most Dependable Varieties

From early Spring to late Autumn there are always flowers to enjoy where Perennials are planted, and the blooms are equally enjoyable growing in beds or borders on the lawn or cut for table and home decoration. Once planted they continue to bloom and increase in beauty each succeeding year.

Perennials require little attention (weeding and watering during the growing season and mulching with fertilizer in the Fall) and, as each variety has a fixed period to flower, a succession of bloom can be enjoyed throughout the season. The following table makes easy the selection of proper varieties.

Botanical Name	Common Name	Time of Bloom								Color						Good for				Ultimate Height	Price for 3 Plants	
		April	May	June	July	August	September	October	White	Yellow	Pink	Red	Maroon	Blue	Purple	Borders	Cutting	Part Shade	Carpet Bedding			Rock Garden
<i>Althea fl. pl.</i>	Hollyhock			*	*	*	*	*	*	*	*	*	*	*	*	*	*	*	*	*	6-8 ft.	\$0.90
	(Red, White, Pink or Yellow)			*	*	*	*	*	*	*	*	*	*	*	*	*	*	*	*	*	(State Color)	
<i>Althea</i> (Allegheny)	Allegheny Hollyhock			*	*	*	*	*	*	*	*	*	*	*	*	*	*	*	*	*	6-8 ft.	.90
<i>Alyssum saxatile com.</i>	Goldentuft		*	*	*	*	*	*	*	*	*	*	*	*	*	*	*	*	*	*	1 ft.	.90
<i>Anemone japonica alba.</i>	Whirlwind Anemone			*	*	*	*	*	*	*	*	*	*	*	*	*	*	*	*	*	2-3 ft.	1.00
<i>Anemone japonica</i> (Queen Charlotte)	Q. Charlotte Anemone			*	*	*	*	*	*	*	*	*	*	*	*	*	*	*	*	*	2-3 ft.	1.00
<i>Aquilegia caerulea</i> hybrid	Hybrid Colorado Columbine		*	*	*	*	*	*	*	*	*	*	*	*	*	*	*	*	*	*	2-3 ft.	1.00
<i>Aster</i> (Feltham Blue)	Feltham Blue Aster			*	*	*	*	*	*	*	*	*	*	*	*	*	*	*	*	*	3 ft.	.90
<i>Aster</i> (Raynor)	Raynor Aster			*	*	*	*	*	*	*	*	*	*	*	*	*	*	*	*	*	4 ft.	.90
<i>Aster</i> (Lavender Climax)	Lavender Climax Aster			*	*	*	*	*	*	*	*	*	*	*	*	*	*	*	*	*	4 ft.	.90
<i>Chrysanthemum maximum</i>	Shasta Daisy		*	*	*	*	*	*	*	*	*	*	*	*	*	*	*	*	*	*	2 ft.	.90
<i>Coreopsis grandiflora</i>	Big Coreopsis		*	*	*	*	*	*	*	*	*	*	*	*	*	*	*	*	*	*	2 ft.	.90
<i>Dianthus barbatus</i>	Sweet-William		*	*	*	*	*	*	*	*	*	*	*	*	*	*	*	*	*	*	2 ft.	.90
<i>Dianthus plumarius</i>	Grass Pink		*	*	*	*	*	*	*	*	*	*	*	*	*	*	*	*	*	*	9 in.	.90
<i>Eupatorium coelestinum</i>	Mistflower		*	*	*	*	*	*	*	*	*	*	*	*	*	*	*	*	*	*	2 ft.	.90
<i>Euphorbia corollata</i>	Flowering Spurge		*	*	*	*	*	*	*	*	*	*	*	*	*	*	*	*	*	*	1½-3 ft.	.90
<i>Eupatorium</i>	Mist Flower		*	*	*	*	*	*	*	*	*	*	*	*	*	*	*	*	*	*	2 ft.	.90
<i>Gypsophila paniculata</i> fl. pl.	(Bristol Fairy)		*	*	*	*	*	*	*	*	*	*	*	*	*	*	*	*	*	*	2 ft.	1.50
<i>Heliopsis scabra zinniae</i> flora	Zinnia Heliopsis		*	*	*	*	*	*	*	*	*	*	*	*	*	*	*	*	*	*	3 ft.	.90
<i>Hemerocallis dumortieri</i>	Early Daylily		*	*	*	*	*	*	*	*	*	*	*	*	*	*	*	*	*	*	18 in.	.90
<i>Hemerocallis lutea</i>	Lemon Daylily		*	*	*	*	*	*	*	*	*	*	*	*	*	*	*	*	*	*	3 ft.	.90
<i>Hemerocallis lutea</i> kwanso	Kwanso Daylily		*	*	*	*	*	*	*	*	*	*	*	*	*	*	*	*	*	*	4 ft.	.90
<i>Hemerocallis thunbergi</i>	Japanese Daylily		*	*	*	*	*	*	*	*	*	*	*	*	*	*	*	*	*	*	3 ft.	.90
<i>Heuchera sanguinea</i>	Coralbells		*	*	*	*	*	*	*	*	*	*	*	*	*	*	*	*	*	*	1½ ft.	1.00
<i>Hibiscus (Marvels) rosea</i>	Pink Rosemallow		*	*	*	*	*	*	*	*	*	*	*	*	*	*	*	*	*	*	3-5 ft.	1.50
<i>Hibiscus (Marvels) coccineus</i>	Scarlet Rosemallow		*	*	*	*	*	*	*	*	*	*	*	*	*	*	*	*	*	*	3-5 ft.	1.50
<i>Hibiscus (Marvels) alba</i>	White Rosemallow		*	*	*	*	*	*	*	*	*	*	*	*	*	*	*	*	*	*	3-5 ft.	1.50
<i>Hosta caerulea</i> (funkia)	Blue Plantainlily		*	*	*	*	*	*	*	*	*	*	*	*	*	*	*	*	*	*	1½ ft.	1.00
<i>Hosta grandiflora</i> (funkia)	Big Plantainlily		*	*	*	*	*	*	*	*	*	*	*	*	*	*	*	*	*	*	2 ft.	1.20
<i>Iberis sempervirens</i>	Evergreen Candytuft		*	*	*	*	*	*	*	*	*	*	*	*	*	*	*	*	*	*	8-10 in.	.90
<i>Linum perenne</i>	Perennial Flax		*	*	*	*	*	*	*	*	*	*	*	*	*	*	*	*	*	*	1-1½ ft.	.90
<i>Lobelia cardinalis</i>	Cardinal Flower		*	*	*	*	*	*	*	*	*	*	*	*	*	*	*	*	*	*	2 ft.	.90
<i>Lychnis chalcedonica</i>	Maltese Cross		*	*	*	*	*	*	*	*	*	*	*	*	*	*	*	*	*	*	3 ft.	.90
<i>Lythrum salicaria roseum</i>	Rose Loosetrife		*	*	*	*	*	*	*	*	*	*	*	*	*	*	*	*	*	*	2 ft.	.90
<i>Papaver orientale</i>	Oriental Poppy		*	*	*	*	*	*	*	*	*	*	*	*	*	*	*	*	*	*	2 ft.	1.00
<i>Papaver orientale</i> (Leveche)	Levermore O. Poppy		*	*	*	*	*	*	*	*	*	*	*	*	*	*	*	*	*	*	2½ ft.	1.00
<i>Papaver orientale</i> (Mrs. Perry)	Mrs. Perry O. Poppy		*	*	*	*	*	*	*	*	*	*	*	*	*	*	*	*	*	*	2½ ft.	1.00
<i>Plumbago</i>	Tarplantain		*	*	*	*	*	*	*	*	*	*	*	*	*	*	*	*	*	*	6-9 in.	1.00
<i>Pyrethrum coccineum</i>	Crocineum		*	*	*	*	*	*	*	*	*	*	*	*	*	*	*	*	*	*	1 ft.	1.00
<i>Veronica repens</i>	Creeping Speedwell		*	*	*	*	*	*	*	*	*	*	*	*	*	*	*	*	*	*	1 ft.	.90
<i>Veronica</i>	Blue Spite		*	*	*	*	*	*	*	*	*	*	*	*	*	*	*	*	*	*	2 ft.	.90

Perennials orders valued at \$3.00 or more will be sent postpaid.

Orders under \$3.00 please add 20 cents if postpaid is desired to help defray expenses in handling and postage.

Peach Bottom, Pa.

I am very pleased with the Mahonia, it is a real beauty. However, I have always found Barr's Trees satisfactory and in 20 years have never lost a single tree or shrub from you.

MRS. EDGAR KIRK.

Ephrata, Pa.

I just wish you could see the setting of Evergreens you planted. It looks wonderful. I don't think you could buy same for \$1,000. I am a good booster for Barr's Nurseries.

G. R. S.

HARDY PERENNIALS—(Continued)

Among The Best Known and Easiest to Grow Hardy Plants

FRIENDSHIP OFFER PEONIES

Choicest Standard and Late Introductions
(Strong 3 to 5 eye Blooming-Size Roots)

(E) Early; (M) Midseason; (L) Late Blooming.

Albatro. White, carmined lined (M)50
Cherry Hill. Glistening garnet (E)75
Edulis Superba. Old rose-pink (E)50
Eugene Verdier. Hydrangea-pink (M)50
Felix Crousse. Brilliant red (L)50
Festiva Maxima. Snowy-white (E)50
Karl Rosenfeld. Dark, velvety crimson (M)50
Lora Dexeimer. Bright crimson (M)50
M. Jules Elie. Glossy shell-pink (M)50
Richard Carvel. Bright crimson (E)65
Sarah Bernhardt. Dark rose-pink (L)65
Walter Faxon. Vivid shell-pink (M)	1.00

3 of any one variety less 10% on orders for \$3.00 or more. Post paid.



Sarah Bernhardt Peony One of the Finest

FRIENDSHIP OFFER
HARDY PHLOX

Phlox embody all the qualities desirable in a plant—hardiness, upright carriage, pretty foliage, fragrance, beauty and variety of color. Besides, Phlox have the added merit of being in bloom during the summer when other plants are out of bloom. July-Sept.

We supply extra strong, field-grown plants that will bloom the first season.

Daily Sketch. Large trusses of enormous individual flowers; beautiful light salmon-pink with faint carmine eye. 3 for 85c.

E. K. Farrington. Large heads of beautiful salmon-pink flowers. Grows to a height of 18 to 24 inches and carries its foliage clear to the ground. A much admired variety wherever grown. 3 for 85c.

Enchantress. Bright salmon pink with darker eye. Strong growth, and rich green, glossy foliage. 3 for 85c.

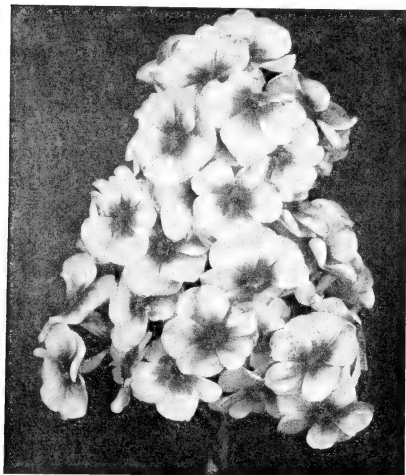
Fuerbrand. Brilliant orange scarlet; medium; blooms very freely. 3 for 85c.

Harvest Fire. Brilliant salmon-orange. Heads are large as well as the individual flowers. Disease-resistant foliage. 3 for \$1.00.

Hauptman Koehl. Rich deep blood-red, color retained a long time. Large, compact trusses on strong stems. 3 for 85c.

Innocence. Tall grower, producing large pure white flowers. One of the finest varieties. 3 for 85c.

12 plants your selection only \$3.25 postpaid.



PHLOX Display Superb Blooms



DELPHINIUM

FRIENDSHIP OFFER

3 Each—9 Finest Delphiniums \$2.75 Postpaid

The Delphinium, or Perennial Larkspur, is one of the finest blue flowers cultivated, and among the most useful and effective of hardy plants. Especially fine for the hardy border, although very effective almost anywhere—in beds, in clumps, in the shrubbery. Ideal for cut flowers.

Plant in well-enriched soil and cut off the old flowering stems as they mature.

The Best Varieties are Included in this Offer as Follows:

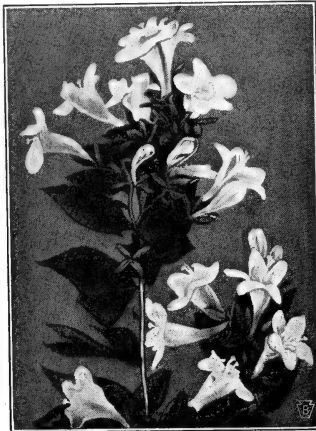
3 **Delphinium bellamosa**, beautiful sky-blue; flowers all summer until cut down by frost. 3 for 75c.

3 **Delphinium Giant Pacific Hybrids**, large flowers on long spikes, in mixed shades of blue. 3 for \$1.35.

3 **Delphinium belladonna**, large flowers of a rich deep blue shade. 3 for 75c.

Beautiful Broad-Leaved Evergreen Shrubs

These splendid plants hold their bright green foliage all the year round and many varieties make a magnificent showing of bloom. Shaded situations are preferred by most of the varieties, giving them an added value in making them available for planting about the foundation of houses or shady corners.



ABELIA GRANDIFLORA

ABELIA

ABELIA grandiflora, 3-4 ft.

Glossy Abelia or Bush Arbutus

Graceful, arching branches; shining, dark green leaves; dainty, waxy, pinkish-white, fragrant flowers from June to November. Very attractive in foreground of foundation plantings, singly or in groups; also makes good hedges.

15-18 in., B. & B. ----- \$ 1.50
 1½-2 ft., B. & B. ----- 1.75

A. g., Edward Gouchet, 3-4 ft.

Edward Gouchet Abelia

(New). Large, bright pinkish-lavender flowers. Unusual, lovely, compact plant of spreading habit. Foliage has bronze tinge.

15-18 in. pot grown ----- \$ 1.50

COTONEASTERS

COTONEASTER horizontalis, 1-1½ ft.

Rock Cotoneaster

Small, pink flowers; ornamental bright red fruit; shiny, green leaves; semi-evergreen. Ideal for rock gardens, or for covering banks.

12-15 in., potted plants ----- \$ 2.00

C. francheti, 5-6 ft. Franchet Cotoneaster

Semi-evergreen with gradually arching branches; fruit orange-red persisting greater part of Winter.

15-18 in., (Potted) ----- \$ 1.25

How To Treat The Soil For Azaleas and Rhododendrons

Rhododendrons and Azaleas require an acid soil. For best results, plant in a mixture of three parts leaf mould or Holland Peat to one part soil. In limestone localities one pound aluminum sulphate to each square yard of surface broadcast Spring and Fall, will prove beneficial in acidifying the soil.

The Rhododendrons we list are nursery-grown, and acclimated, and have had the benefit of careful transplanting by which they have gained root systems which will cause them to make better growth than collected plants.

AZALEAS

Few flowering plants can excel the Azaleas for all around usefulness. They make a most brilliant color display, either singly or in groups, and can be used to good advantage in brightening the foundation planting, doing well among other evergreens.

A. hinodegiri, 3-4 ft.

Crimson Evergreen Azalea

Bright red, double flowers; very showy.

8-10 in., B. & B. - \$2.00 12-15 in., B. & B. - \$2.50
 10-12 in., B. & B. - 2.25 15-18 in., B. & B. - 3.00
 1½-2 ft., B. & B. ----- \$ 5.00

A. yodogawa, 2-3 ft.

Yodogawa Azalea

Brilliant pinkish-lavender, double flowers in early Spring. Very hardy.

1½-2 ft., B. & B. - \$3.50 2-2½ ft., B. & B. - \$4.50

BOXWOODS

Will thrive in full sunlight, or in shady locations where no other Evergreen will grow.

BUXUS sempervirens, 12-15 ft. Boxbush

Bushy; deep rich color; slow growing. Frequently used for hedges.

10-12 in., B. & B. ----- \$ 1.00
 12-15 in., B. & B. ----- 2.00

B. suffruticosa, 3-4 ft. Dwarf English Box

Especially adapted to edging walks or as a low hedge. This is the attractive variety growing in the formal gardens at Washington's home, Mt. Vernon.

	Ea.	Per 10	Per 100
5-6 in., B. & B. -----	\$0.30	\$ 2.75	\$25.00
6-8 in., B. & B. -----	1.00	9.00	
8-10 in., B. & B. -----	1.50		

DAPHNE

DAPHNE cneorum, 1 ft. Rose Daphne

Covered in May with beautiful pink, tubular flowers; fragrant. A splendid rock garden plant.

6-9 in., B. & B. - \$1.00 9-12 in., B. & B. - \$1.50

EUONYMUS

EUONYMUS patens (sieboldianus,) 6-7 ft.

Spreading Euonymus

Handsome, large, dark green foliage; white flowers July; red berries in Fall.

12-15 in., B. & B. \$1.00 1½-2 ft., B. & B. \$1.50

E. r. vegetus, 3-4 ft. Bigleaf Wintercreeper

(Evergreen Bittersweet). Bushy growth, bright scarlet fruits. Will climb, or grow as bush.

9-12 in., 2 yr. plant ----- \$0.75
 12-15 in., 4 yr. plant ----- 1.00

**Plant American Hollies For
Year 'Round Delight**

Hollies love a slightly acid, well-drained, loamy soil. Dug with a ball of earth, as especially prepared at Barr's, they transplant comparatively easy.

AMERICAN HOLLY *Ilex opaca*, 10-12 ft.

For berries in abundance one must plant the non-bearing type (if there is not another in the vicinity) as well as the berrying kind.

GUARANTEED BERRY-BEARING, B. & B.			
12-18 in. from pots	\$ 2.50	4-5 ft. -----	\$ 9.00
2-3 ft. -----	4.00	5-6 ft. -----	15.00
3-4 ft. -----	6.50	6-8 ft. -----	20.00

NON-BEARING, (Male Trees), B. & B.			
3-4 ft. -----	\$ 4.50	8-10 ft. -----	\$20.00
10-12 ft. -----	\$30.00		

SEX UNDETERMINED, B. & B.

(50 to 60% of these plants will berry)

12-18 in. -----	\$ 2.00	2-3 ft. -----	\$ 3.00
3-4 ft. -----	\$ 4.00		

***ILEX crenata microphylla*, 5-6 ft.**

Small-leaved Holly

Deep green, boxlike leaves. Black berries. Unusually attractive in foundation plantings or as specimens. Compact and slow growing.

1½-2 ft., B. & B.	\$3.00	2½-3 ft., B. & B.	\$ 5.50
2-2½ ft., B. & B.	4.50	3-3½ ft., B. & B.	7.50

***I. c. convexa (bullatum)*, 3-4 ft. Boxleaf Holly**

Exquisite, dwarf, spreading Evergreen Shrub with small, box-like, convex, glossy, persistent leaves. Small, black berries, remaining over Winter. Especially suitable for foundation planting in sun or shade, or where a dwarf plant is desired.

12-15 in. B.&B.	\$. 2.50	1½-2 ft. B.&B.	\$. 4.00
-----------------	----------	----------------	----------

***I. glabra*, 4-6 ft.**

Inkberry

Deep green leaves turning metallic deep purple in Winter; black berries, attractive to birds.

15-18 in. B. B.	\$ 2.00	1½-2 ft. B. & B.	\$ 3.00
-----------------	---------	------------------	---------

LAUREL

***KALMIA latifolia*, 4-8 ft. Mountain Laurel**

(The Pennsylvania State Flower)

Bright, dark-green leaves; large showy clusters of rose-colored flowers. One of the most beautiful, most popular and most useful of native, woody plants.

18-24 in., B. & B.	\$ 3.50	2-2½ ft., B. & B.	\$ 4.00
--------------------	---------	-------------------	---------

LEUCOTHOE

***LEUCOTHOE catesbaei*, 3-4 ft.**

Drooping Leucothoe

Attractive, fragrant, white flowers in May, borne in long, pendulous racemes.

8-10 in. clumps, B. & B.	-----	\$ 1.00
12-18 in., clumps, B. & B.	-----	2.50

PACHYSANDRA

***PACHYSANDRA terminalis*, 6-8 in.**

Spurge Ground Cover

Evergreen ground cover with dense, glossy foliage forming thick carpet. One of the most valuable plants for difficult situations under trees and in dense shade.

1 yr., 4-6 in., per 10, --	\$.120;	per 100, --	\$. 8.00
2 yr., 4-6 in., per 10, --	1.75;	per 100, --	10.00

ANDROMEDA

***PIERIS japonica*, 3-5 ft.**

Andromeda

Bears graceful pendants of white flowers in early Spring. Glossy bright green foliage, especially attractive in Winter when bronze.

15-18 in., B. & B.	\$ 4.00	1½-2 ft., B. & B.	\$ 5.00
--------------------	---------	-------------------	---------

FIRETHORN

***PYRACANTHA coccinea lalandi*, 6-8 ft.**

Laland Scarlet Firethorn

Glossy foliage; white flowers, followed by large clusters of orange berries; very ornamental.

15-18 in. from pots -----	\$ 2.00
18-24 in. from pots -----	3.00
2-2½ ft. from pots -----	4.00

RHODODENDRONS

The Rhododendron is a very effective plant used in masses or groups or near dark foliage evergreens. It is excellent for the difficult shaded corner or on the north side of the house. It fills a need not supplied by any other plant. Its appealing beauty is not only its magnificent florescence but the thick, smooth, glossy leaves borne the year 'round.

Rhododendron Hybrids

Handsome of the Rhododendrons, the flowers being larger and of a bright, clearer color. They grow into compact, beautiful bushes five to eight feet high. The first five varieties are grafted plants.

***RHODODENDRON Caractacus*. Purple-crimson.**

Medium.	
1½-2 ft., B. & B. -----	\$ 6.50
2-3 ft., B. & B. -----	8.00

***R. Charles Bagley*. Bright red. Medium.**

1½-2 ft., B. & B. -----	\$ 6.50
-------------------------	---------

***R. Mrs. C. S. Sargent*. Deep pink, yellow eye. Tall**

1½-2 ft., B. & B. -----	\$ 6.50
3-4 ft., B. & B. -----	12.50

***R. Parsons Gloriosa*. Lavender blush. Tall.**

1½-2 ft., B. & B. -----	\$ 6.50
-------------------------	---------

***R. Roseum elegans*. Rich pink. Tall.**

1½-2 ft., B. & B. -----	\$ 6.50
2-2½ ft., B. & B. -----	8.00
3-4 ft., B. & B. -----	12.50

***RHODODENDRON carolinianum*, 4-5 ft.**

Carolina Rhododendron

Light rose flowers in early May. Foliage is relatively small and plant is broad and compact. Tolerates sunshine.

1½-2 ft., clumps B. & B. -----	\$ 4.25
--------------------------------	---------

***R. c. album*, 3-4 ft.**

White Carolina Rhododendron

Pure white form of the preceding.	
18-24 in. -----	\$ 2.50
2-2½ ft. clumps, B. & B. -----	3.25

***R. maximum*, 6-10 ft. Rosebay Rhododendron**

Flowers pale rose to nearly white. July. Good for mass planting.

18-24 in. plants -----	\$ 3.00
2½-3 ft. clumps, B. & B. -----	5.00
3-4 ft., clumps, B. & B. -----	8.00

When To Plant All Kinds of Nursery Stock

Coniferous and Broad-leaved Evergreens

Evergreens transplant best during the Spring months, before and just as new growth is beginning, or for several months following August 1 when the new growth is completed and has become sufficiently hardened. (March 15 to June 15, and August 1 to December 20.)

Deciduous Trees, Shrubs and Vines

From the time the ground opens in the Spring until the plant starts growth, and again from the time the wood is ripened and the leaves begin to fall in the Autumn until the ground is frozen. (March 10 to June 1 and October 1 to December 20.)

After June 1 planting of Trees and Shrubs can still be continued if Balled and Burlapped plants are used. For this there is an extra charge of 20c each for Shrubs. Cost of Baling and Burlapping of Trees depends on size as per schedule given on Page 24. Where B. & B. is stated there is no extra charge.

Large trees are moved with safety during the entire Winter.

Grass Seed

Spring or Autumn. (March 10 to May 20, and August 1 to October 10.)

Perennials

Spring or Autumn. (April 1 to June 1, and September 1 to November 30.)

Allow reasonable time for filling orders received during the shipping season, as orders are filled in rotation.

ORDER EARLY

No other plants offer so much in value as Evergreens giving as they do enjoyment twelve months the year 'round. Then, too, they can be used in so many interesting ways and make a lasting improvement to any property.

On the following pages there is a choice of Evergreens for every purpose—for foundation planting, for single or massed plantings on the open lawn, for lining walks, or for hedges.

Barr's Evergreen Trees Use Retinosporas For Graceful, Soft Effects

Figures following variety name indicate the height of the tree when at from 40 to 50 years old.

The graceful habit and the soft, fine foliage of the Retinosporas make them favorite Evergreens. These refined Evergreens attain unusual beauty. Recommended for foundation planting and as lawn specimens in sunny locations. Prefer moist soil.

CHAMAECYPARIS lawsoniana, 8-10 ft. (Cupressus) Lawson Cypress

Formal, pyramidal type; silvery-blue foliage contrasting effectively in groups of large Evergreens.
2-3 ft. ----- \$ 2.00 3-4 ft. ----- \$ 3.00

C. obtusa nana, 4-5 ft. Dwarf Hinoki Cypress

Exquisite, low Evergreen with short, curiously twisted, graceful, dark green branchlets; narrow, irregular pyramid. Useful in rock gardens and low foundation plantings.
15-18 in. ----- \$ 3.00 1½-2 ft. ----- \$ 4.00

C. plumosa, 20-30 ft. Plume Retinospora

Pyramidal; dense foliage, soft and plume-like; rich green; handsome and distinctive.
15-18 in. ----- \$ 1.00 1½-2 ft. ----- \$ 1.50
2-2½ ft. ----- \$ 2.40

C. pl. aurea, 20-30 ft. Golden Plume Retinospora

Tall, pyramidal; bright golden foliage, soft and plummy. Valuable for contrast.
15-18 in. ----- \$ 1.00 1½-2 ft. ----- \$ 1.50
2-2½ ft. ----- \$ 2.40



PLUME RETINOSPORA

C. pl. lutescens, 2½-3 ft. Dwarf Yellowplume Retinospora

Broad, dense bush with bright green, plummy foliage, tipped golden.
1½-2 ft. ----- \$ 2.00 2-2½ ft. ----- \$ 2.75

Discount on quantity rate 10% on 5 or more of one variety and size.

Junipers Worthily Fill Almost Every Planting Need



SILVER REDCEDAR

JUNIPERS

Junipers are valuable ornamental plants that thrive best in moist soils and sunny, open positions. The tall, columnar forms are used as accent plants; the low, bushy forms for foundations and massing; the prostrate forms for covering slopes, or in the rock garden, or in the foreground of foundation plantings. A very hardy class.

JUNIPERUS ch. pfitzeriana, 5-6 ft.

Pfitzer Juniper

Wide growing; plumose, graceful horizontally spreading branches; foliage blue-green.

12-15 in. spr. --\$ 1.25 2-2½ ft. spr. --\$ 3.50
 15-18 in. spr. -- 2.00 3-4 ft. spr. -- 5.00
 1½-2 ft. spr. -- 2.50 4-5 ft. spr. -- 6.00

J. ch. sargentii, 1-2 ft. **Sargent Juniper**

Prostrate habit; grass green winter and summer. Good in rock gardens.

15-18 in. spr. --\$ 3.00 1½-2 ft. spr. --\$ 3.50

J. ch. smithii, 6-8 ft. **Smith Chinese Juniper**

Graceful, bushy form; foliage light green, remaining fresh and bright Summer and Winter.

2-2½ ft. ----- \$ 3.00 3-4 ft. ----- \$ 5.00
 2½-3 ft. ----- 4.00 4-5 ft. ----- 6.50

J. ch. sphaerica (fortunei), 10-12 ft.

Fortune Juniper

Densely branched, broadly pyramidal, rounded form with gray-green foliage. Useful in mixed plantings where it is quite distinctive.

2½-3 ft. ----- \$ 3.00

J. communis depressa plumosa, 1 ft.

Purple Spreading Juniper

Spreading habit; foliage tinged with rich purple during fall and winter.

15-18 in. spr. --\$ 2.00 1½-2 ft. spr. --\$ 2.50
 2-2½ ft. spr. ----- \$ 3.50

J. com. hibernica, 6-8 ft.

Irish Juniper

Slender, columnar form; foliage silvery-gray on dense, upright branches. Its narrow form makes interesting contrast with other Evergreens.

1½-2 ft. ----- \$ 1.50 2-2½ ft. ----- \$ 2.00

J. excelsa stricta, 6-8 ft. **Spiny Greek Juniper**

Slow, compact grower; glaucous, blue color; narrow, pyramidal form.

12-15 in. ----- \$ 1.00 1½-2 ft. ----- \$ 1.75
 2-2½ ft. ----- \$ 2.00

J. squamata meyeri, 3-4 ft.

Meyer Juniper

Shining blue color, tinted pink; dwarf, bushy habit; very attractive, unusual Evergreen that adds interest to any planting.

2-2½ ft. ----- \$ 2.00

J. virginiana burkii, 8-10 ft.

Burks Juniper

Dense, columnar form; distinctive blue color in summer, plum-colored winter.

2-2½ ft. ----- \$ 3.00 2½-3 ft. ----- \$ 4.00
 3-4 ft. ----- \$ 4.50

J. v. cannarti, 12-15 ft.

Cannart Redcedar

Compact columnar habit; rich dark green foliage. Its blue berries in autumn give it a distinct ornamental advantage.

2-2½ ft. ----- \$ 3.00 4-5 ft. ----- \$ 6.50
 2½-3 ft. ----- 4.00 5-6 ft. ----- 7.50
 3-4 ft. ----- 5.00 10-12 ft. ----- 16.00

J. v. glauca, 12-15 ft.

Silver Redcedar

Columnar, vigorous grower; silvery blue, changing to bluish-grey. Good as a color accent among other Evergreens.

2-2½ ft. ----- \$ 3.00 3-4 ft. ----- \$ 5.00
 2½-3 ft. ----- 4.00 4-5 ft. ----- 6.50
 5-6 ft. ----- \$ 9.00

J. v. keteleeri, 12-15 ft.

Keteleer Redcedar

Refined, symmetrical, compact pyramidal growth; intense green. In autumn bears large, showy slate-blue berries of considerable decorative value. Not susceptible to cedar apple rust.

2-2½ ft. ----- \$ 3.00 2½-3 ft. ----- \$ 4.00
 3-4 ft. ----- \$ 5.00

A large ball of Lancaster County's famous fertile soil goes with each "Will Grow" Evergreen which helps it in getting off to a good start and making continued satisfactory growth.

Because we ball and burlap and prepare "Will Grow" Evergreens for shipment by freight our customers have the advantage of this more economical method of delivery.

Spruces Are Most Effective on the Open Lawn

SPRUCES

Spruces are valued especially for specimen planting either singly, or in groups on large lawns; too large growing for foundation planting. These magnificent trees do best in suburban sections. The stately, regular, pyramidal outline of these hardy trees is strikingly effective.

PICEA barri, 40-50 ft. Barr Spruce

Slow growing, dense, pyramidal Evergreen with glossy, dark green needles.

4-5 ft. ----- \$ 5.00 5-6 ft. ----- \$ 7.00

P. c. albertiana, 40-50 ft. Black Hills Spruce

Conical, symmetrical outline; bluish-green; compact and hardy; drought resisting.

2-3 ft. ----- \$ 2.50 4-5 ft. ----- \$ 4.00
3-4 ft. ----- 3.00 6-8 ft. ----- 8.50

P. excelsa, 60-80 ft. Norway Spruce

Fast growing; dark green; valuable for screens and hedges. When older makes a fine silhouette against the sky.

15-18 in. ----- \$ 1.00 4-5 ft. ----- \$ 4.50
1½-2 ft. ----- 1.50 5-6 ft. ----- 6.50
2-3 ft. ----- 2.00 6-7 ft. ----- 10.00
3-4 ft. ----- 3.00 7-8 ft. ----- 15.00

Finest of The Green Spruces

P. orientalis, 50-70 ft. Oriental Spruce

Its classic outline and small, neat, glossy green needles closely clothing the branches make this a plant of uncommon beauty. One of the most beautiful of all spruces.

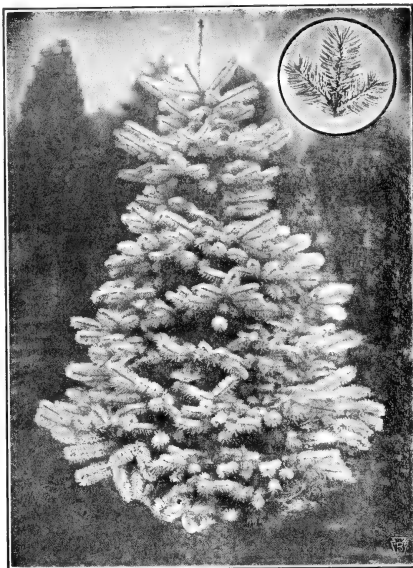
1½-2 ft. ----- \$ 2.50 3-4 ft. ----- \$ 4.50
2-2½ ft. ----- 3.00 4-5 ft. ----- 6.00
2½-3 ft. ----- 3.50 5-6 ft. ----- 7.00

Douglas Fir

Medium conical form and rapid growing. Foliage dark bluish-green, flat, long persisting. One of the best tall-growing evergreens. Use as specimen plant or in screens. The needles of the Douglas Fir resemble those of the Spruce but are usually longer. Thrives in almost any soil and withstands both moisture and drought. Valued for its symmetrical, compact outline and persistence of lower branches.

PSEUDOTSUGA douglasi, 70-80 ft. Douglas Fir

1½-2 ft. ----- \$ 1.50 3-4 ft. ----- \$ 4.00
2-2½ ft. ----- 2.00 4-5 ft. ----- 6.00
2½-3 ft. ----- 2.50 6-7 ft. ----- 10.00
12-14 ft ----- \$35.00



MOORHEIM BLUE SPRUCE

P. pungens, 60-80 ft., Colorado Spruce

Foliage light-green. Withstands heat and drought. Striking in appearance due to its perfect pyramidal outline and horizontally spreading branches.

15-18 in. ----- \$ 1.50 2½-3 ft. ----- \$ 4.00
1½-2 ft. ----- 2.00 3-4 ft. ----- 5.00
2-2½ ft. ----- 3.00 4-5 ft. ----- 6.00

P. p. glauca, 60-80 ft. Blue Colorado Spruce

Like above, except for a slight bluish tinge.

2-2½ ft. ----- \$ 5.00 3-4 ft. ----- \$ 6.50
2½-3 ft. ----- 6.00 4-5 ft. ----- 9.00
6-8 ft. ----- \$14.00

P. p. kosteri, 60-80 ft. Koster Blue Spruce

Beautiful silvery-blue, broad, symmetrical tree making a striking appearance as a specimen on the lawn, or planted in groups. Very hardy.

2-2½ ft. ----- \$ 5.00 4-5 ft. ----- \$11.00
2½-3 ft. ----- 7.00 5-6 ft. ----- 16.00
3-4 ft. ----- 8.00 6-7 ft. ----- 20.00
12-14 ft. ----- \$40.00

Most Intensely Blue Spruce

P. p. moorheimi, 60-80 ft. Moorheim Blue Spruce

More intensely blue than Koster Blue Spruce, and with larger needles making a glorious effect in color and form.

2-2½ ft. ----- \$ 6.00 3-4 ft. ----- \$ 9.00
2½-3 ft. ----- 7.50 4-5 ft. ----- 12.00
5-6 ft. ----- \$17.50

If it is worth planting, it is worth the most skilled planting available.

Ask us about our Free Landscape Planning Service.



AUSTRIAN PINE
PINES

The Pines with their spreading branches bearing clusters of long, needle-shaped leaves, make valuable, majestic evergreens for permanent planting. They endure a wide range of soil and climate, and as they grow older gain in picturesqueness.

***Pinus montana mughus*, 4-5 ft. Mugho Pine**

Dwarf; many stems spreading outward and upward; erect new growth resembling candles. A low, compact plant, almost globular in outline. Suitable for foundation plantings, or in groups.
 10-12 in. wide -- \$ 1.50 15-18 in. wide -- \$ 3.50
 12-15 in. wide -- 2.50 1½-2 ft. wide -- 4.50

***P. nigra*, 60-80 ft. Austrian Pine**

Heavily plumed, with long, rich, glossy, dark green, rigid needles. Will thrive in poor soil, or damp situations. Good for specimen, or mass planting; also for windbreaks.
 2-3 ft. ----- \$ 3.00 4-5 ft. ----- \$ 7.00
 3-4 ft. ----- 4.50 5-6 ft. ----- 9.00
 12-15 ft. ----- \$40.00

***P. resinosa*, 50-60 ft. Red Pine**

Spreading, somewhat pendulous branches; dark green leaves. Good in massed background planting or as a specimen.
 1½-2 ft. ----- \$ 1.75 4-5 ft. ----- \$ 3.50
 3 -4 ft. ----- 2.50 5-6 ft. ----- 6.00
 12-15 ft. ----- \$40.00

***P. strobus*, 60-80 ft. White Pine**

A tall, straight, fast-growing, hardy tree with long, flexible, light green needles. Very graceful. Good as specimen or in groups.
 1½-2 ft. ----- \$1.75 3-4 ft. ----- \$ 3.00
 2 -3 ft. ----- 2.25 4-5 ft. ----- 5.00
 12-15 ft. ----- 40.00

***P. sylvestris*, 25-35 ft. Scotch Pine**

Fast growing, open, round-headed, picturesque tree; twisted needles with bluish-green hue. Resists smoky, city conditions.
 2-3 ft. ----- \$ 2.00 3-4 ft. ----- \$ 3.00

**YOU GET BEAUTY AND VIGOR
IN "WILL GROW" EVERGREENS**

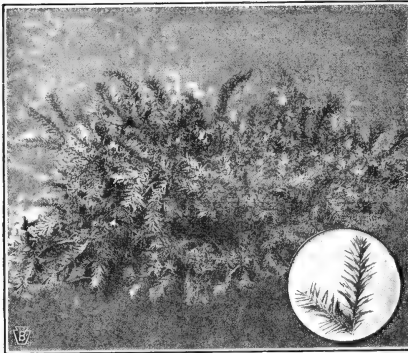
Barr's "Will Grow" Evergreens have a character all their own, due to our system of shaping, root-pruning and frequent transplanting, which results not only in a close, beautiful, compact growth so desirable in Evergreens, but aids in quick recovery after transplanting.

Being hand-dug when your order is received all roots are carefully secured. Taken fresh from the ground is assurance that your Evergreens will have their full vitality and that you can count on them giving you the most satisfactory results.



WHITE PINE

Yews Unexcelled In Either Sunny or Shady Places



SPREADING ENGLISH YEW

YEWS

Adaptability to part shade, semi-dwarf habit, handsome, dark green foliage winter and summer, give the Yews their high value as Evergreens for foundation and other ornamental planting. Best evergreen family for difficult city conditions and foundation planting. Any planting can be greatly enriched by a liberal use of Yews. Many of the Yews produce a profusion of red berries during the Fall.

TAXUS baccata repandens, 4-5 ft.

Spreading English Yew

Low gracefully spreading habit; long, glossy, blue-green foliage. Ideal as a low plant to face off groups. Thrives in shade.

10-12 in. spr.	\$ 1.50
12-15 in. spr.	2.50
15-18 in. spr.	3.50

T. cuspidata, 8-12 ft.

Common Spreading Yew

Most vigorous of the Yews; very hardy; dark, green foliage; excellent for foundation planting or hedges. Has a pleasing informal spreading habit. Lends itself well for group planting.

10-12 in. wide --	\$ 1.50	2-2½ ft. wide --	\$ 5.50
12-15 in. wide --	2.50	2½-3 ft. wide --	8.00
15-18 in. wide --	3.00	3-3½ ft. wide --	10.00
1½-2 ft. wide --	4.25	3½-4 ft. wide --	12.50
	4.5 ft. wide		15.00

T. c. capitata, 15-20 ft.

Upright Yew

Symmetrical, upright and compact grower; foliage dark green; fruit, bright scarlet. Very hardy; invaluable for foundation planting; excellent in masses. Makes a rich hedge.

10-12 in.	\$ 1.50	2½-3 ft.	\$ 6.00
12-18 in.	2.00	3-3½ ft.	8.00
1½-2 ft.	3.25	3½-4 ft.	9.00
2-2½ ft.	5.00	4 -5 ft.	12.50

Yews Are the Most Satisfactory of All Evergreens. A Complete Planting Can Be Made of Them Alone.

T. c. nana (brevifolia), 3-4 ft.

Dwarf Yew

Very handsome, slow growing, low, compact Evergreen, with short, rich, dark green needles. Splendid for foundation plantings. Unexcelled for permanence.

6-10 in. wide --	\$ 1.50	18-21 in. wide --	\$ 5.50
10-12 in. wide --	2.00	21-24 in. wide --	6.50
12-15 in. wide --	3.50	2-2½ ft. wide --	7.00
15-18 in. wide --	4.50	2½-3 ft. wide --	8.00
	3-4 ft. wide		\$9.00

T. media hatfieldi, 6-8 ft.

Hatfield Yew

Compact, conical form, with upright branches, center full; very beautiful, hardy variety; rich black-green, darkest of all Yews.

12-15 in.	\$ 2.00	1½-2 ft.	\$ 4.50
15-18 in.	3.50	2-2½ ft.	6.00

T. m. hicksi, 8-12 ft.

Hicks Yew

Upright, narrow, conical form; dense, dark green foliage. Effective accent plant. Very attractive in Fall for its profusion of red berries.

15-18 in.	\$ 2.00	2½-3 ft.	\$ 6.50
1½-2 ft.	3.50	3 -4 ft.	9.00
2-2½ ft.	5.00	4 -5 ft.	12.50



UPRIGHT YEW

Arborvitae---Popular Evergreens At A Low Cost

ARBORVITAE

The clean, neat, compact appearance and soft foliage of the Arborvitae make them appropriate for foundation planting where they are almost indispensable, and for planting on small lawns as well as large areas. The Arborvitae are hardy and easy to transplant, but prefer moist soils. They offer a wide range of possibilities.

THUJA occidentalis, 15-25 ft.

American Arborvitae

Broad, conical tree; foliage bright green. Good for screens and hedges and accent purposes in evergreen plantings.

1½-2 ft. -----	\$ 1.50	3 -4 ft. -----	\$ 3.00
2-2½ ft. -----	2.00	4 -5 ft. -----	4.00
2½-3 ft. -----	2.50	12-14 ft. -----	12.00

T. oc. elegantissima, 15-20 ft.

Lee Golden Arborvitae

Compact, pyramidal plant; golden green foliage; hardy and vigorous in growth. Its bright color will enliven any evergreen planting.

1½-2 ft. -----	\$ 1.50
2-2½ ft. -----	2.50
2½-3 ft. -----	3.00

Arborvitae Are Widely Used for Economical Foundation Plantings, Open Lawn Specimens, or Evergreen Hedges.



PYRAMIDAL ARBORVITAE

T. oc. globosa, 3-4 ft.

American Globe Arborvitae

Grows naturally in ball-like form; light green foliage. Very hardy. Use as a low type for variety in foundation plantings, or as accent plant for colonial type house on each side of entrance step.

12-15 in. -----	\$ 1.25	15-18 in. -----	\$ 2.25
-----------------	---------	-----------------	---------

T. oc. plicata, 10-15 ft.

Moss Arborvitae

Dense, attractive, blue-green, pyramidal variety. Very beautiful crested, obtuse foliage.

1½-2 ft. -----	\$ 1.50	3 -4 ft. -----	\$ 3.00
2½-3 ft. -----	2.50	4 -5 ft. -----	5.00

T. oc. pyramidalis, 15-25 ft.

Pyramidal Arborvitae

Narrow columnar growth; denser and darker green than American Arborvitae. Most widely used tall, narrow type. Holds color well throughout year.

15-18 in. -----	\$ 1.00	2½-3 ft. -----	\$ 2.75
1½-2 ft. -----	1.75	3 -4 ft. -----	3.75
2-2½ ft. -----	2.25	4 -5 ft. -----	5.00
5-6 ft. -----	\$ 7.00		

T. oc. wareana, 10-15 ft.

Ware (Siberian) Arborvitae

Broad conical type; dense, slow growing, of rugged appearance. Pleasant bluish-green foliage unchanged by Winter. Very hardy.

1½-2 ft. -----	\$ 1.75	2½-3 ft. -----	\$ 3.50
2-2½ ft. -----	2.50	3 -4 ft. -----	5.00

BIOTAS

Branchlets in vertical planes on slender, ascending branches from near the base.

THUYA orientalis—BIOTA aurea conspicua, 7-8 ft.

Goldspire Oriental Arborvitae

Pyramidal shaped and a very interesting novelty. Golden yellow in spring, bronze-yellow in winter.

2-3 ft. -----	\$ 3.00	3-4 ft. -----	\$ 3.75
---------------	---------	---------------	---------

T. or.—Biota aurea nana, 2-3 ft.

Dwarf Golden Oriental Arborvitae

Popular, low, conical plant; bright golden hue becoming bronze-tipped in winter. A spectacular living globe of gold and green.

9-12 in. -----	\$ 1.00	15-18 in. -----	\$ 2.00
12-15 in. -----	1.75	1½-2 ft. -----	2.50

T. or.—Biota barri, 5-6 ft.

Dwarf Oriental Arborvitae

Conical plant of slow growth, retaining rich green color all winter.

4-5 ft. -----	\$ 5.00
---------------	---------

T. or.—Biota compacta, 4-5 ft.

Siebold Arborvitae

Compact, formal type like Biota aurea nana but with constant, fresh green foliage. Desirable for formal effects or hedges.

15-18 in. -----	\$ 1.40	18-24 in. -----	\$ 2.00
-----------------	---------	-----------------	---------

Use Hemlocks For Their Graceful, Handsome Foliage

HEMLOCKS — A Leading Specialty at Barr's

The Hemlock with its graceful branches, and beautiful, neat, needle foliage can well be made the basis of many fine plantings. Its informality of outline is particularly pleasing. On the open lawn it makes a handsome specimen, but wherever planted it is never out of place. Will remain small many years if sheared regularly.

TSUGA canadensis, 60-80 ft.

Canada Hemlock

The soft, feathery, dark green, fernlike foliage of the Canada Hemlock will give a softening touch to any planting, and combined with its gracefully spreading branches makes of it a magnificent tree. It is the State Tree of Pennsylvania. For specimen planting or in groups on the open lawn, or for hedges.

15-18 in. -----	\$ 1.25	4 - 4½ ft. -----	\$ 6.00
1½-2 ft. -----	2.00	4½- 5 ft. -----	6.50
2-2½ ft. -----	2.75	5 - 6 ft. -----	8.00
2½-3 ft. -----	3.50	6 - 7 ft. -----	11.00
3-3½ ft. -----	4.25	10 -12 ft. -----	25.00
3½-4 ft. -----	5.25	12 -14 ft. -----	30.00
14-16 ft. -----	\$35.00		

T. caroliniana, 50-60 ft

Carolina Hemlock

More compact, darker green and smaller growing than preceding. Yew-like foliage. Its conspicuous, yellowish-brown cones in contrast with the dark foliage makes a most interesting effect.

8-10 ft. -----\$20.00 10-12 ft. --\$25. to \$30.00



CANADA HEMLOCK

When Building A New Home

It is advisable to budget 2 to 3 percent for landscaping. Real estate men agree an investment of 3 percent of the cost of the house in Evergreens, Trees, and Shrubs increases the value at least 10 per cent and your enjoyment of your home to an immeasurable extent.

At the very beginning of operations put aside the amount you purpose spending for landscaping. Without good landscaping a house gives the appearance of "something wanting," or not being finished.

When and How to Plant Evergreens



(1) Dig hole 6 inches larger and deeper than ball of earth.

Evergreens transplant best during the Spring months, before and just as new growth is beginning, or for several months following August 15 when the new growth is completed and has become sufficiently hardened.

The excavation for planting should be considerably larger and deeper than the encased roots so as to allow liberal space around the ball for filling in with good soil. Do not remove burlap, only loosen it at top and roll back as indicated in illustration. Carefully pack soil under earth ball. Mix peat moss and rotted manure, or Vigoro, with soil used for back fill. When hole is two-thirds refilled, FLOOD WITH WATER.

In restoring the remainder of the excavated soil allow a shallow basin to remain around the tree to collect the rain and enable it to soak into the ground. Mulch with well-rotted manure or straw to conserve the moisture in the ground and keep it from becoming hard. In the Fall mound the soil against the plants.

Nightly spray the foliage with plain water, and weekly direct a STRONG force of water against the under side of the foliage, when the sun is not shining. This treatment preserves the vigor and beauty of the plant.

"Will Grow" Shade and Ornamental Trees

Does your home stand out in the bare sun, without back ground and unframed? Shade trees will make a wonderful transformation and give comforting shade as well.



NORWAY MAPLE

Acer—MAPLES

A. platanoides , 50-75 ft. Norway Maple	
6-8 ft. high	\$ 2.50
8-10 ft. high 1¼-1½ in. cal.	3.50
10-12 ft. high 1½-2 in. cal.	4.50
12-14 ft. high 2-2½ in. cal.	6.00
14-16 ft. high 3-4 in. cal.	10.00
18-22 ft. high 5-6 in. cal. B&B	27.00
20-24 ft. high 6-7 in. cal. B&B	30.00

A. p. schwedleri , 30-40 ft. Schwedler Purple Maple	
6-8 ft. high	\$ 3.00
8-10 ft. high 1-1¼ in. cal.	5.00
18-22 ft. high 5-6 in. cal. B&B	24.00
20-24 ft. high 6-7 in. cal. B&B	35.00

A. rubrum , 40-60 ft. Red Maple	
6-8 ft. high ¾-1 in. cal.	\$ 3.00
14-16 ft. high 3-4 in. cal.	12.00
14-16 ft. high 4-5 in. cal. B&B	27.00

A. saccharinum wieri , 50 ft. Wier Maple	
8-10 ft. high	\$ 3.00
10-12 ft. high 1¼-1½ in. cal.	4.00

A. saccharum , 40-60 ft. Sugar Maple	
6-8 ft. high	\$ 2.75
8-10 ft. high	3.50
8-10 ft. high 1¼-1½ in. cal.	4.25
10-12 ft. high 1½-2 in. cal.	5.50
12-14 ft. high 2-2½ in. cal.	7.00
16-18 ft. high 4-5 in. cal. B&B	24.00
18-22 ft. high 5-6 in. cal. B&B	30.00

Red Maple

A. atropurpureum , 10-15 ft. Bloodleaf Maple	
15-18 in. (Potted) \$ 2.50	3¼-4 ft. B&B \$ 9.00
1½-2 ft. B&B	3.50
3-3½ ft. B&B	7.50
5-6 ft. B&B	\$15.00

Betula—BIRCH

B. alba , 30-40 ft. White Birch	
6-8 ft. high, B&B	\$ 3.50
B. a. laciniata , 30-40 ft. Cut Leaf Weeping Birch	
5-6 ft. high	\$ 2.50
6-8 ft. B&B	4.00

Cercis—REDBUD

C. canadensis , 12-15 ft. Redbud (Judas Tree)	
3-4 ft. B&B	\$ 1.25
4-5 ft. B&B	2.00
5-6 ft. B&B	\$ 2.50

Cornus—DOGWOODS

C. florida , 12-20 ft. White Dogwood	
2-3 ft.	\$ 1.00
3-4 ft.	1.50
6-8 ft. B&B	\$ 4.00
C. f. rubra , 12-18 ft. Red Dogwood	
2½-3 ft. B&B	\$ 2.50
3-3½ ft. B&B	3.00
5-6 ft. B&B	\$ 7.50
C. mas , 12-18 ft. Cornelian Cherry	
3-4 ft.	\$ 1.25
4-5 ft.	\$ 2.50



WASHINGTON THORN

Crataegus—HAWTHORNS

C. coccinea , 12-15 ft. Thicket Thorn	
6-8 ft. B&B	\$ 5.00
C. cordata , 12-16 ft. Washington Thorn	
3-4 ft. B&B	\$ 2.00
4-5 ft. B&B	3.00
C. oxyantha , 10-12 ft. English Hawthorn	
4-5 ft. B&B	\$ 2.50
C. o. pauli , 12-15 ft. Paul Scarlet Thorn	
5-6 ft. B&B	\$ 3.00
6-8 ft. B&B	\$ 4.00

Fagus—BEECH

F. americana , 40-50 ft. American Beech	
12-14 ft. 4-5 in. Cal. B&B	\$22.00
F. sylvatica , 40-50 ft. European Beech	
4-5 ft. B&B	\$ 5.00
F. s. heterophylla , 30-40 ft. Fernleaf Beech	
4-5 ft. B&B	\$ 7.00
F. s. pendula , 25-35 ft. Weeping Beech	
6-8 ft. B&B	\$10.00
8-10 ft. 2-2½ in. cal. B&B	15.00
F. s. riversi , 35-40 ft. Rivers Purple Beech	
5-6 ft. B&B	\$12.00
6-8 ft. 1½-2 in. cal. B&B	16.00
8-10 ft. 2-2½ in. cal. B&B	\$22.00 to 25.00

Fraxinus—WHITE ASH

F. americana , 60-70 ft. White Ash	
6-8 ft.	\$ 2.00
10-12 ft. 1¼-1½ in. cal.	3.50

Ginkgo—GINKGO

G. biloba , 50-70 ft. Maidenhair Tree	
6- 8 ft. high	\$ 2.50
8-10 ft. 1- 1¼ in. cal.	3.50
10-12 ft. 1¼-1½ in. cal.	4.75
10-12 ft. 1½-2 in. cal.	6.25
12-14 ft. 2- 2½ in. cal.	8.00
12-14 ft. 2½-3 in. cal.	11.00
14-16 ft. 3- 3½ in. cal.	14.00

Laburnum—GOLDENCHAIN

L. vossii , 20-30 ft. Goldenchain	
5- 6 ft. high	\$ 4.00

Larix—LARCH

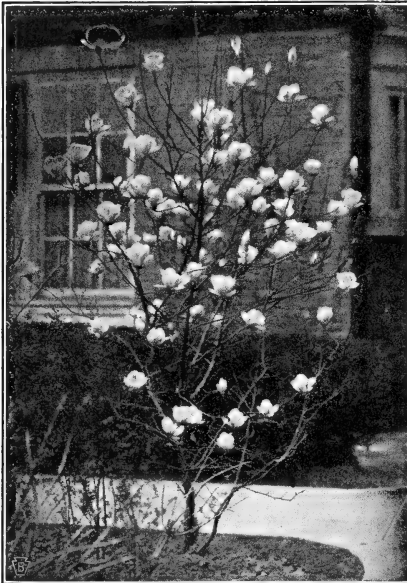
L. europae , 50-60 ft. European Larch	
3- 4 ft. high .. \$ 2.00	5- 6 ft. B&B .. \$ 4.00

Liquidamber—SWEET GUM

L. styraciflua , 50-70 ft. Sweet Gum	
6- 8 ft. high	\$ 3.00
8-10 ft. high, 1- 1¼ in. cal.	5.00
10-12 ft. high, 1½-2 in. cal. B&B ..	7.50
12-14 ft. high, 2- 2½ in. cal. B&B ..	10.00
12-14 ft. high, 2½-3 in. cal. B&B ..	14.00

Liriodendron—TULIP TREE

L. tulipifera , 50-70 ft. Tulip Tree	
8-10 ft. high, 1¼-1½ in. cal.	\$ 4.00
10-12 ft. high, 1½-2 in. cal.	6.00



MAGNOLIA SOULANGEANA

Magnolia—MAGNOLIAS

M. glauca , 15-20 ft. Sweetbay	
4- 5 ft. B&B .. \$ 5.00	5- 6 ft. B&B .. \$ 6.00
M. soulangeana , 12-18 ft. Saucer Magnolia	
2-2½ ft. B&B .. \$ 4.00	4- 5 ft. B&B .. \$ 6.00
M. s. lennei , 12-18 ft. Lenne Magnolia	
3- 4 ft. B&B .. \$ 6.50	5- 6 ft. B&B .. \$10.00
6- 8 ft. B&B ..	\$12.50
M. s. nigra , 10-12 ft. Purple Magnolia	
2- 3 ft. B&B .. \$ 5.00	4- 5 ft. B&B .. \$10.00
3- 4 ft. B&B .. 6.00	5- 6 ft. B&B .. 12.00
M. stellata , 6-8 ft. Star Magnolia	
1½-2 ft. B&B .. \$ 3.00	3- 4 ft. B&B .. \$ 8.00
4-5 ft. B&B ..	\$10.00

Malus—FLOWERING CRABS

M. floribunda , 10-15 ft. Flowering Crab	
4- 5 ft. high .. \$ 2.50	5- 6 ft. high .. \$ 3.00
M. f. atrosanguinea , 10-15 ft. Carmine Crab	
4- 5 ft. high .. \$ 2.50	5- 6 ft. high .. \$ 3.00
M. hoppi , 12-15 ft. Red Flowering Crab	
4- 5 ft. high .. \$ 2.50	5- 6 ft. high .. \$ 3.00
M. ioensis plena , 10-15 ft. Bechtel Crab	
4- 5 ft. high ..	\$ 2.50
M. neidzwetzkyana , 15-20 ft. Redvein Crab	
4- 5 ft. high .. \$ 2.50	6- 8 ft. high .. \$ 3.50
M. scheidckeri , 10-12 ft. Scheidcker Crab	
4- 5 ft. high .. \$ 2.00	5- 6 ft. high .. \$ 3.00

Oxydendrum—SOURWOOD

O. arboreum , 10-20 ft. Sourwood	
2- 3 ft. B&B .. \$ 1.25	4- 5 ft. B&B .. \$ 2.50
3- 4 ft. B&B .. 2.00	5- 6 ft. B&B .. 4.00

Platanus—PLANETREE

P. orientalis , 50-60 ft. Oriental Plane	
6- 8 ft. high	\$ 2.50
8-10 ft. high, 1-1¼ in. cal.	3.00
8-10 ft. high, 1¼-1½ in. cal.	4.00
10-12 ft. high, 1½-2 in. cal.	5.00
12-14 ft. high, 2- 2½ in. cal.	8.00
12-14 ft. high, 2½-3 in. cal.	12.00

Populus—POPLAR

P. nigra italica , 50-60 ft. Lombardy Poplar	
6- 8 ft. high .. \$ 1.00	8-10 ft. high .. \$ 1.50
10-12 ft. high, 1½-2 in. cal.	\$ 2.50

Prunus—FLOWERING CHERRIES

P. serrulata (Kwansan) , 20-25 ft. Double Rose Cherry	
4- 5 ft. \$ 2.50	5- 6 ft. B&B .. \$ 4.00
P. s. (Kofugen) , 20-25 ft. Double Pink Cherry	
4- 5 ft. \$ 2.50	5- 6 ft. B&B .. \$ 4.00
P. s. (Mt. Fuji) , 20-25 ft. Double White Cherry	
4- 5 ft. \$ 2.50	5- 6 ft. B&B .. \$ 4.00
P. s. (Paul Wohlert) , 20-25 ft. Paul Wohlert Cherry	
4- 5 ft. \$ 2.50	5- 6 ft. B&B .. \$ 4.00
P. shirofugen , 20-25 ft. Double Blush Pink Cherry	
4- 5 ft. B&B .. \$ 2.50	5- 6 ft. \$ 4.00
Larger specimens of the above \$6.00 to \$8.00 ea.	
P. subhirtella pendula , 15-20 ft. Single Weeping Cherry	
5- 6 ft. stems, 3 year head, B&B ..	\$ 6.00

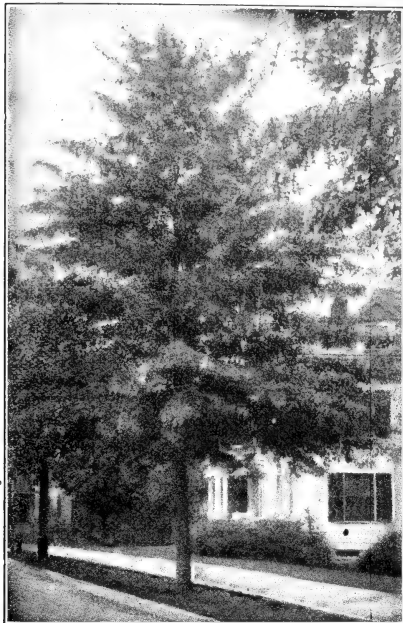
Prunus—FLOWERING PLUMS

P. bilariana , 8-10 ft. Purpleleaf Plum	
6- 8 ft. high	\$ 3.50
P. triloba, fl. pl. , 6-10 ft. Double Flowering Plum	
3- 4 ft. high .. \$ 1.25	4- 5 ft. high .. \$ 2.00

BALL and BURLAP CHARGES

When it is desired to have Trees or Shrubs balled and burlapped (B. & B.) there will be an extra charge for this additional treatment unless quoted as B. & B. This charge will be in conformity with the following schedule:

Size of Tree	Size of Ball	Extra for B&B
Large Shrubs	8-10 in.	\$ 0.85
5-10 ft.	10-12 in.	.50
8-10 ft.	12-15 in.	.75
10-12 ft.	16-18 in.	1.25
10-12 ft.	18-20 in.	2.00
12-14 ft.	20-24 in.	3.50
12-14 ft.	24-30 in.	5.50
14-16 ft.	30-35 in.	8.50
16-18 ft.	36-40 in.	11.50
18-20 ft.	45-50 in.	16.00



PIN OAK

Quercus—OAKS

Q. coccinea , 70-90 ft.	Scarlet Oak
8-10 ft. high, 1¼-1½ in. cal.	\$ 5.50
10-12 ft. high, 1½-2 in. cal.	7.00
12-14 ft. high, 2 -2½ in. cal.	9.00
Q. palustris , 40-60 ft.	Pin Oak
6- 8 ft. high	\$ 2.75
8-10 ft. high, 1 -1¼ in. cal.	3.50
10-12 ft. high, 1¼-1½ in. cal.	4.00
10-12 ft. high, 1½-1¾ in. cal.	5.00
12-14 ft. high, 1¾-2 in. cal.	6.00
12-14 ft. high, 2 -2½ in. cal.	7.00
14-16 ft. high, 2½-3 in. cal.	9.00
14-16 ft. high, 3 -3½ in. cal.	12.00
16-20 ft. high, 4 -5 in. cal. B&B	30.00
Q. rubra , 50-75 ft.	Red Oak
6- 8 ft. high	\$ 3.00
8-10 ft. high, 1 -1¼ in. cal.	4.00
10-12 ft. high, 1¼-1½ in. cal.	5.00
10-12 ft. high, 1½-1¾ in. cal.	6.00
12-14 ft. high, 1¾-2 in. cal.	7.00
12-14 ft. high, 2 -2½ in. cal.	8.00
14-16 ft. high, 2½-3 in. cal.	12.00
16-20 ft. high, 4 -5 in. cal. B&B	33.00

Salix—WILLOW

S. babylonica , 30-40 ft.	Weeping Willow
6- 8 ft. high	\$ 2.00
8-10 ft. 1¼-1½ in. cal.	3.00
S. vitellina pendula , 25-30 ft.	Golden Weeping Willow
6- 8 ft. high	\$ 2.00
8-10 ft. high, 1½-2 in. cal.	3.00
15 to 18 ft., 2½-3 in. cal.	7.00

Figures following botanical names indicate approximate heights these varieties attain.

Sophora—SCHOLAR TREE

S. japonica , 15-20 ft.	Chinese Scholar Tree
8-10 ft., 2½-3 in. cal. B&B	\$12.00
10-12 ft., 4 -4½ in. cal. B&B	25.00

Sorbus—MOUNTAIN ASH

S. aucuparia , 20-40 ft.	European Mountain Ash
6- 8 ft. high .. \$ 2.00	8-10 ft. high .. \$ 2.50

Tilia—LINDEN

T. americana , 60-80 ft.	(Basswood) American Linden
8-10 ft. high	\$ 3.00
12-14 ft. high, 2-2½ in. cal.	5.00
T. cordata , 50-60 ft.	Littleleaf European Linden
8-10 ft. high, 1 -1½ in. cal.	\$ 2.50
10-12 ft. high, 1½-2 in. cal.	4.00
12-14 ft. high, 2 -2½ in. cal.	5.00
T. tomentosa (argentea) , 40-50 ft.	Silver Linden
12-14 ft. high, 2 -2½ in. cal.	\$ 5.00

Ulmus—ELM

U. americana , 60-80 ft.	American Elm
6- 8 ft. high	\$ 1.50
8-10 ft. high, 1 -1¼ in. cal.	2.75
12-14 ft. high, 2 -2½ in. cal.	4.00
14-16 ft. high, 3¼-4 in. cal.	8.00
U. a. vaseii , 60-80 ft.	Vase Elm
8-10 ft. high, 1 -1¼ in. cal.	\$ 2.50
10-12 ft. high, 1¼-1½ in. cal.	3.50
U. glabra , 50-75 ft.	Scotch Elm
12-14 ft. high, 2 -2½ in. cal.	\$ 4.00
14-16 ft. high, 2½-3 in. cal.	5.00
U. moliniei , 60-75 ft.	Moline Elm
10-12 ft. high, 1½-2 in. cal.	\$ 4.00
12-14 ft. high, 2 -2½ in. cal.	5.00
12-14 ft. high, 2½-3 in. cal.	7.50
U. pumila , 40-50 ft.	Asiatic or Chinese Elm
6- 8 ft. high	\$ 1.50
8-10 ft. high, 1 -1¼ in. cal.	2.25
10-12 ft. high, 1½-2 in. cal.	3.50
12-14 ft. high, 2 -2½ in. cal.	4.50
14-16 ft. high, 2½-3 in. cal.	6.50



SWEET GUM

Your Plants And Lawns Respond Best If Fertilized

When small quantities of fertilizers or insecticides are wanted by parcel post, please add postage as follows: 20c for 10 lbs., or less. Larger quantities will be sent by express or freight, collect.

Adco. Garden rubbish such as leaves, cuttings, straw, etc., is turned into a true manure (best of all fertilizers) when mixed with Adco. 25 lbs. Adco makes $\frac{3}{4}$ ton valuable manure. 25 lbs., \$2.00; 150 lbs., \$10.50.

Aluminum Sulphate. Useful in creating acid soil conditions. Broadcast 1 to 3 lb. to each square yard of surface. 5 lbs., 50c; 10 lbs., 85c; 25 lbs., \$1.50; 50 lbs., \$2.50; 100 lbs., \$4.00.

Bovung. Natural cow manure, thoroughly dehydrated and pulverized. Free of weed seeds. An organic fertilizer of superior merit. One pound is sufficient for 25 sq. ft. of area. 10 lbs., 60c; 25 lbs., \$1.25; 50 lbs., \$2.00; 100 lbs., \$3.50; 500 lbs., \$15.00; 1000 lbs., \$27.50; 1 ton, \$50.00.

Lawn Fertilizer (Barr's) Special formula that makes grass develop stronger and deeper roots to better compete with Crab Grass and other weeds, which are surface rooting. Gives good color and vigor to the lawn. Apply 1 lb. to 40 sq. ft., and water heavily. 5 lbs., 60c; 10 lbs., \$1.00; 25 lbs., \$1.75; 50 lbs., \$3.00; 100 lbs., \$5.00.

Leaf Mold. Nature's plant food. Mix with soil in which Rhododendrons and Azaleas are to be planted, 3 parts Leaf Mold to 1 part soil. 25 lbs., 65c; 50 lbs., \$1.00; 100 lbs., \$1.50; 500 lbs., \$6.00; 1 ton (2000 lbs.), \$20.00.

Lime, Hydrated. For lawn and field use where the ground has become sour. One pound is sufficient for 25 sq. ft. of surface. 10 lbs., 35c; 50 lbs., 90c; 100 lbs., \$1.50; 500 lbs., \$6.50.

Peat Moss. (Ground) Applied as mulch, conserves moisture, keeps down weeds, mellows and acidifies the soil and beautifies at same time. Water well before and immediately after applying as a mulch. 1 bale covers 125 sq. ft. to depth of 2 inches. $\frac{1}{2}$ bale, \$3.00; 1 bale, \$5.50.

Garden Accessories

Bird Baths

Concrete, beautifully and substantially molded. Diameter of bowl 28 inches; pedestal 29 $\frac{1}{2}$ inches; height over all 34 in., weight 220 lbs. \$10.00 ea.

Japanese Beetle Traps

Most practical way to catch Japanese Beetles. Simple in operation; effective in action. Furnished with bait and strong hangers. 75c each. Extra bait 15c per charge; \$1.00 per large can.

Special Wrap for Trees

Pure vegetable waterproof, kraft paper for wrapping trunks of newly planted trees. Adjusts itself automatically to contour of tree. Protection for shade and fruit trees against sun scald, loss of moisture and attacks of insects, rabbits and field mice. Rolls of 155 lineal feet, 5 inches wide, 75c ea. By Parcel Post 15c additional.

Sprayers

All brass, continuous high pressure, reinforced full quart sprayer. Combination nozzle. Built like a fire extinguisher. Tested for 65 lbs. pressure. \$2.50 ea. Also heavy tin sprayers of 1 qt. capacity at 50c each.

Rhododendron Food (Barr's). Both acidifies the soil and provides plant food especially needed by Rhododendrons, Azaleas and other broad-leaved evergreens. Broadcast 1 lb. to each square yard two or three times a year. 5 lbs., 60c; 10 lbs., \$1.00; 25 lbs., \$2.00.

Rhodo-Azalea Food. (G & O) Has been responsible for many beautiful prize specimens. Acid where acid is needed. Broadcast 3 lbs. per 100 sq. ft. 10 lbs., \$1.25; 25 lbs., \$2.50; 100 lbs., \$8.75.

Sheep Manure Pulverized. A natural manure for lawns, potting soil, and flower gardens. 5 lbs., 40c; 10 lbs., 65c; 25 lbs., \$1.20; 50 lbs., \$2.00; 100 lbs., \$3.50.

Soil Potting. Mixture of soil, sand and fertilizer. Ideal for potting purposes, or any place where especially good soil is needed. $\frac{1}{2}$ bu., 50c; 1 bu., 75c; 2 bu., \$1.25; 3 bu., \$1.60; 5 bu., \$2.00; 1 ton, \$4.50.

Stim-U-Plant for more beautiful plants and flowers. The original plant food tablet makes plants grow faster and bloom better. On market 24 years. Wonderful results. Odorless, clean and economical. Prices: 10 tablets, 10c; 50 tablets, 25c; 100 tablets, 75c; 500 tablets, \$2.50; 1000 tablets, \$3.50.

Tobacco Dust. Excellent dusting insecticide with fertilizing value; apply liberally to plants and on surface of soil as a mulch. 25 lbs., 75c; 50 lbs., \$1.15; 100 lbs., \$2.00.

Tobacco Stems, Cut. A combined fertilizer, mulch and insecticide for lawns and shrubbery, trees and evergreens. Unlike stable manure does not introduce weed seeds. 100 lbs. will cover 500 sq. ft. thickly. \$1.75 per 100 lbs.; 500 lbs., \$6.75; \$22.50 per ton.

Tree Food (Barr's). Trees will make quick response to this special food and its action will also be long lasting. Especially valuable for Oak trees where leaves show tendency to turn yellow. Use 4 lbs. to each 1 in. caliper early spring, and again in July. Do not use as top dressing but insert in holes in ground as far as branches extend above. 5 lbs., 50c; 10 lbs., 85c; 25 lbs., \$1.50; 50 lbs., \$2.65; 100 lbs., \$5.00.

Vigoro. For use in growing food crops only. Special prepared plant food. Vigoro supplies all 11 of the vital food elements all growing plants need from the soil. It's clean, odorless, sanitary and easy to apply. Use 1 lb. to 20-25 sq. ft. area. 5 lbs., 45c; 10 lbs., 85c; 25 lbs., \$1.50; 50 lbs., \$2.50; 100 lbs., \$4.00.

Wood-Ashes. Good lawn grasses will not succeed in sour soil. Wood ashes correct that. If bone meal has been sown in the land do not use Wood-ashes for three or four weeks. One pound will sow 10 sq. ft. 25 lbs., \$1.25; 50 lbs., \$2.00; 100 lbs., \$3.50.

For Growing Healthier Plants

VITAMIN B₁
(Pure Crystalline Powder)

Amazing new growth stimulant for garden and house plants, roses, shrubs and trees. Produces larger blooms, more luxuriant foliage; restores sick and straggly plants to health; decreases transplanting mortality; gives lawns increased vigor and improved color. A season's supply of the pure crystalline powder for the average garden with full directions. \$1.00 postpaid.

Insecticides And Fungicides To Keep Plants Healthy

Aphistrogen. Kills aphids (plant lice), also refreshes and invigorates the foliage. Invisible, non-poisonous, will not turn foliage yellow. 2 oz., 50c; ½ pt., \$1.25; 1 pt., \$2.25; 1 qt., \$3.50.

Arsenate of Lead. (Powdered) To combat leaf-eating insects. Use 1½ to 2 lbs. to 50 gals. of water. 1 lb., 40c; 4 lbs., \$1.00.

Black Leaf 40. For aphids and all sucking insects. 1 oz., 35c; 5 ozs., \$1.00; 1 lb., \$2.50.

Bordeaux Mixture. For mildew, blight, black rot and other fungus diseases of fruits and plants. 1 lb. 40c; 4 lbs., \$1.00; 10 lbs., \$2.25.

Borerkil is a scientifically prepared paste that kills boring insects when injected into their burrows. Safe, convenient and simple to use. Indispensable as a dog repellent and poultry fumigant. Packed in handy tubes with injectors included. Garden Size, 60c.

Clotricide. Complete spray for Roses. Controls fungus diseases, leaf eating worms and insects, also plant lice or aphids. Convenient, effective, economical, as no other spray is needed. 10 gal. size, 85c; 20 gal. size, \$1.50.

C. P. O. Liquid insecticidal soap spreader that increases the efficiency of contact spray solutions. Odorless; non-poisonous; does not discolor foliage. 3 ozs., 25c; 1 qt., \$1.00; 1 gal., \$2.50.

Cyanogas "A". Sure, quick, economical mole control. Also effective for ants, locusts, mice, snakes, rats and other rodents. Cyanogas "A" is a powder which upon exposure to the air gives off a poisonous gas. Since it is the gas that kills it is not necessary to bring the dust into actual contact with the pest being controlled. Complete instructions with every can. 1 lb., 75c; 5 lbs., \$3.00.

Dogzoff. Will keep dogs, cats or rabbits from any place where they are not wanted. Not poisonous to plants. Will not injure animals. 4 oz. bottle, 60c postpaid.

Fish Oil Soap. Excellent remedy for scale and aphids. 1 lb., 35c; 5 lbs., \$1.50; postage extra.

Fungtrogen. Effective preventive and remedy for mildew, black spot and other fungus diseases. ½ pt., 75c; 1 pt., \$1.25; 1 qt., \$2.00.

Insectrogen. Adheres to foliage long time, killing insects present, those hatching later or coming from unsprayed plants. 4 oz. can, 60c; ½ pint, \$1.00; 1 pt., \$1.75; 1 qt., \$2.75.

Japec. Kills and repels Japanese Beetles. Does not discolor foliage. Non-poisonous to man and animals. Very effective repellent against Beetles, and deadly to caterpillars, aphids, red spider, etc. 5 gal. size, 75c; 20 gal. size, \$2.00.

Jap-Ro-Gide. Improved repellent for protecting foliage plants against Japanese Beetles. Safe to humans, birds and animals, leaves no deposit, easy to use, odorless, yet strongly repellent to Japanese Beetles. 1 lb. canister (sufficient for 20 gal.), \$1.25; 5 lbs. canister, \$5.50.

Killogen. Plant spray and ant killer. A contact spray to control insects in the garden, window boxes and on evergreens. Splendid for house plants. Non-poisonous to humans, harmless to foliage or blooms. Another "ogen" product, 2½ oz. bottle, 50c (makes 250 times its volume).

Lime Sulphur. In powder form for control of San Jose scale and fruit tree diseases. 1 lb., 40c; 5 lbs., \$1.75; 10 lbs., \$2.50.

Marvel Spray. Sure specific for mealy bugs. Kills by penetrating the waxy coat of the insect. Stimulates plant growth; does not burn or stain. 2 oz. bottle, 50c.

Molgen. An "ogen" product in semi-powder form. Eliminates moles from lawns, flower and bulb beds, etc. Will not harm soil or grass. ½ lb. can, 50c.

Red Arrow. Fatal to both chewing and sucking insects, yet harmless to human beings and pets, such as dogs, cats and birds. 1 oz. makes 4 to 8 gal. of spray. 1 oz., 35c; ¼ pt., \$1.00; 1 pint, \$2.85; 1 qt., \$5.40.

Sunoco. Most effective spray for scale insects. 1 gal. makes 30 to 75 gal. of spray. 1 gal., \$1.40; 5 gal., \$5.50.

T A T Ant Bait. Just squeeze bait on top of ant hill. Enables you to treat all colonies at once. Each tube sufficient for several hundred small size hills. 1 oz. tube, 25c each.

T A T Ant Trap. Recommended for the home due to exclusive safety feature. Destroys both sweet and grease eating ants. Worker ants enter traps and carry poison back to colony and soon the queen and every member is destroyed in their nests which usually are outside the house or in the foundations. 25c each.

Tree Tanglefoot. Easily applied, effective, economical and non-injurious protection for fruit, shade and ornamental trees against ants, caterpillars and all crawling insects. One pound is sufficient for 12 to 15 ft. of tree band. Also useful for waterproofing wounds in trees. 1 lb. can, 75c. Postage extra.



Complete all-purpose Rose Spray. Offers the first definite mildew and black spot control. Combining an insecticide it kills all insects, including sucking and leaf-eating types. Remains on foliage, repelling subsequent attacks. Stimulates plant growth, resulting in fine foliage and luxuriant blooms.

Kit "A" (Protects 12 to 20 roses a season) \$1.50

Kit "B" (Protects 50 to 75 roses a season) 4.00

Kit "C" (Protects 100 to 150 roses a season) 6.00

Kit "D" (Estate Kit, makes 128 gals.) 20.00

"One of the inexpensive possessions that we can continue to enjoy, come war and taxes, is our Shade and Decorative Trees."—Pathfinder.

VINES AND GROUND COVERS

Selection of Vines For Any Place Made Easy

VARIETIES, SIZES AND PRICES

10% Discount when three or more of one kind are ordered.

Please order by botanical names.	Each	Walls and Surfaces	Porches and Per-	Banks and Slopes	Flowering	Autumn Color	Evergreen
		*	*	*	*	*	*
<i>Ampelopsis tricuspidata</i> (veitchii)—Boston Ivy, 2 yr. potted plants	\$0.60	*	*	*	*	*	*
<i>Bignonia radicans</i> —Trumpet Creeper, strong 2 yr. potted plants	.75	*	*	*	*	*	*
<i>Celastrus scandens</i> —American Bittersweet, field grown, 2 yr.	.60	*	*	*	*	*	*
<i>Clematis paniculata</i> —Sweet Autumn Clematis, potted plants, 2 yr. old	.60	*	*	*	*	*	*
<i>Clematis henryi</i> —Henry Clematis (white), 2 yr. potted plants	1.00	*	*	*	*	*	*
<i>Clematis hybrid andre</i> —Madame Andre Clematis (red) 2 yr. potted plants	1.00	*	*	*	*	*	*
<i>Clematis jackmani</i> —Jackman Clematis (purple), 2 yr. potted plants	1.00	*	*	*	*	*	*
<i>Clematis ramona</i> —Ramona Clematis (lavender), 2 yr. potted plants	1.00	*	*	*	*	*	*
<i>Euonymus radicans</i> —Wintercreeper, heavy, 2 yr. plants	.50	*	*	*	*	*	*
<i>Euonymus radicans var. vegetus</i> —Big Leaf Wintercreeper, 2 yr. plants	.60	*	*	*	*	*	*
<i>Hedera helix</i> —English Ivy, 2½ in. pots	.20	*	*	*	*	*	*
<i>Hedera helix</i> —English Ivy, 4 in. pots	.50	*	*	*	*	*	*
<i>Hedera helix cuspidata minor</i> —Small-Leaf English Ivy, 2½ in. pots	.25	*	*	*	*	*	*
<i>Hedera helix cuspidata minor</i> —Small-Leaf English Ivy, 2-3 ft., 4 in. pots	.50	*	*	*	*	*	*
<i>Lonicera japonica halliana</i> —Hall Japanese Climbing Honeysuckle, out of 4 in. pots.	.50	*	*	*	*	*	*
<i>Lycium chinese</i> —Chinese Matrimony Vine, 2 yr. plants	.50	*	*	*	*	*	*
<i>Wisteria sinensis</i> —Chinese Wisteria (blue), 3 yr. field grown	1.50	*	*	*	*	*	*
<i>Wisteria sinensis alba</i> —White Chinese Wisteria, 3 yr. field grown	1.50	*	*	*	*	*	*

Evergreen Ground Cover Plants For Difficult, Shady Places

For difficult places under trees and on banks where it is impossible for grass to thrive a class of plants designated as "Ground Cover Plants" can be used with good results. These plants are also valuable in Evergreen and Shrub plantings, filling up the intervening spaces. Other advantages are that they always look well, yet require practically no attention; and being evergreen, are as effective in Winter as in Summer. Among the best plants for this purpose are English Ivy, Pachysandra and Periwinkle.

PACHYSANDRA

Under trees Pachysandra is the real answer to the problem of covering the bare ground with greenery. Another advantage is the protection to the roots of trees afforded by the Pachysandra. The glossy foliage is very attractive. Use 3 or 4 to 1 sq. ft. of the area to be covered.

	Per 100	Per 1000
1 yr. plants	\$8.00	\$70.00
2 yr. plants	10.00	90.00

ENGLISH IVY

The English Ivy is particularly effective used on banks, to edge walks and under trees. An advantage in using Barr's English Ivy is that it goes further in coverage, each pot containing two plants—a twofold advantage. Plant 10 to 12 inches apart and you will soon have a carpet of green.

	Per 10	Per 100
2½ in. pot		
size	\$ 1.40	\$12.00
(Large or Small-leaved)		

PERIWINKLE

Not only is the Hardy Periwinkle a good ground cover under trees and on hillsides, but its pretty blue flowers also make an appeal. The glossy, evergreen foliage remains beautiful the year round. When planting do not place the crown of the plant below the surface of the soil. Use 3 or 4 to 1 sq. ft. of area.

	Per 100	Per 1000
Strong, field-		
grown plants	\$8.00	\$70.00
Potted plants	12.50	100.00

25 Plants at the quoted 100 rate; 250 or more Plants at the 1000 rate.

5 BEST VARIETIES OF FRENCH LILACS \$9.00

- 1 Alphonse Lavallee, (D) lavender. \$2.00 ea.
- 1 Charles Joly, (D) red. \$2.00 ea.
- 1 Michel Buchner, (D) pinkish lilac. \$2.00 ea.
- 1 Mme. Lemoine, (D) (white). \$2.00 ea.
- 1 William Robinson, (D) pinkish violet. \$2.00 ea.

All strong, bushy, 2½-3 ft. plants, double; flowering.

Any variety your selection \$2.00 each.
3 for \$5.40

Lilac prices are F. O. B. Nurseries, and include packing.



THE EVER-POPULAR LILAC



Barr's GRASS SEED *Makes Fine Lawns*

Barr's Lawn Grass Seed Mixtures have been designed primarily to produce a lawn that is at once permanent, quick starting, and a good green color. They are guaranteed to be entirely free of Fall or Crab Grass seed. Re-cleaned by modern machinery, Barr's Lawn Grass Seed Mixtures are free from chaff, which makes these mixtures go twice as far. They test especially high in germination, providing a thick stand from the beginning which is essential in holding weeds in check.

One pound of seed will sow 150 to 200 square feet of lawn. Keep ground constantly moist until grass is well started then water heavily at intervals during dry periods.

BARR'S Sunnyside Lawn Seed Mixture

This is a combination of the most desirable permanent grasses—dwarf, close-growing, fine-leaved—producing a good green lawn even in dry weather. As the chief ingredient of a good lawn is superfine Kentucky Blue Grass there is a larger proportion of this ideal grass in this mixture. No Timothy nor Rye nor coarse-bladed annual grasses are used to cheapen this mixture. It will germinate quickly and provide a neat, permanent lawn. Besides the Kentucky Blue Grass other varieties included are fine-leaved perennial grasses and some Chewing's Fescue, a higher-priced grass that holds weeds in check much better than other varieties.

Lb. 55c; 5 lbs. \$2.65; 10 lbs. \$5.00; 15 lbs. \$7.25; 25 lbs. \$11.50; 100 lbs. \$42.00; prepaid.

BARR'S Fancy White Dutch Clover

Fancy re-cleaned seed. Excellent for lawns. Mix 2 to 4 ounces with each pound of above named mixtures if you want Clover on the lawn.

1/4lb. 45c; 1/2lb. 80c; lb. \$1.50; 5 lbs. \$6.75.

BARR'S Green Mantle Lawn Seed Mixture

This is a splendid mixture of good grasses for average conditions of soil and sunshine. It has a large proportion of Kentucky Blue Grass; also other desirable grasses for a good, quick effect which helps to hold weeds in check. Will give the lawn an enduring velvety, deep green mantle. Very free from weed seeds.

Lb. 35c; 5 lbs. \$1.50; 10 lbs. \$2.90; 15 lbs. \$4.25; 25 lbs. \$7.00; 100 lbs. \$27.00, prepaid.

BARR'S Shady Side Lawn Seed Mixture

Composed of shade-loving permanent varieties of fine-leaved grasses—no Timothy nor Ryegrass. Included are fine-leaved perennial grasses, including *Poa trivialis*, which have proved best adapted for situations of a difficult nature due to shade.

Feed lawns under trees heavily three times a year—spring, early summer, and fall. Failure under trees is due more to competition of tree roots than shade. Plenty of feed gives both grass and trees a chance to exist. As a fertilizer we recommend Barr's Special Lawn Fertilizer listed on Page 26.

Lb. 60c; 5 lbs. \$2.85; 10 lbs. \$5.50; 15 lbs. \$8.00; 25 lbs. \$12.00; 100 lbs. \$46.00, prepaid.

We Prepay Delivery Charges on All Orders for Barr's Grass Seed

GLORIOUS COLORS OF THE HARDY "MUMS" UNTIL FROST

In late fall, when nearly all other flowers have ceased to bloom, the hardy garden Chrysanthemums or Winter Shrubs as they are sometimes called, are still here to delight with their great variety of form and color.

Strong plants from pots for easy and most successful transplanting, ready for delivery May 1 to 20.

Azalea Flowering Chrysanthe- Mums

These prolific-blooming, hardy Chrysanthemums have become very popular in the last few years. Each plant is literally covered with blooms in the fall, estimates running as high as 600 flowers the first year. They bloom from late July until frost, forming wide, dense "cushions" 1½ feet high by 2 to 3 feet across when fully developed. Good for rock-gardens.

Bronze Cushion. Deep bronze, turning bronzy yellow.

Pink Cushion. Beautiful shade of bright pink.

Queen Cushion. White.

Yellow Cushion. Brilliant golden yellow.

Cushion Mum. **Red Cushion.** Improved form.

Any of above Cushion Chrysanthemums, 3 for 90c.

Lovely Spoon Mums

A charming and most interesting new type. Petals are tubular for most of their length, but flatten out near the tip like miniature spoons.

Pink Spoon. Large; semi-double; light rose or shell-pink.

White Spoon. Double white flowers with creamy center.

Yellow Spoon. Very lovely double flowers of brilliant yellow color.

Any of above Spoon Mums, 3 for 90c.

Korean Chrysanthemums

These exquisite, new, hardy creations, with their lovely pastel shades, compare with the gerbera in daintiness and richness. Will bloom until frost, making wonderful late color effects in the garden. Excel in hardiness, profuseness of bloom and ease of growth. 2 to 2½ ft.

Ember. Brilliant glowing bronze—a combination of coral and orange shades. Flowers in mid-October.

King Midas. Charming soft yellow, occasionally tinted with bronze; full double flowers up to 4 inches across. Late September through October. Decorative.

Louise Schling. Bright, glowing salmon-red in color. Strong grower. October.

Mandarin. Coral-salmon, copper and bronzy gold blending in a delightful combination. Flowers 2 inches across. 45c each, 3 for \$1.20.

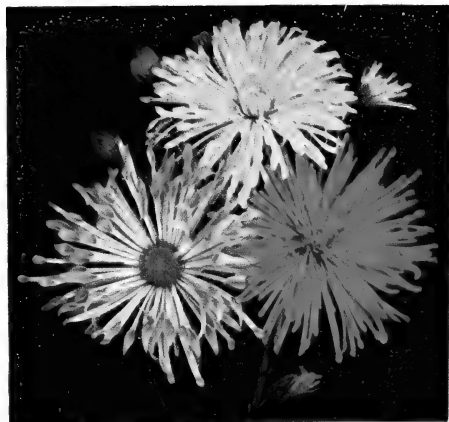
Roberta Copeland. Coral-salmon, copper and bronzy gold blend to a delightful combination. Strong, erect grower. Large flowers. Early October.

Saladin. Oriental red, shading to coral-red with coppery tones on reverse; 3-inch flowers with four rays of petals, delightfully fragrant.

Symphony. Mauve-rose overcast with soft coppery rose, having the sheen of damask silk. Fascinating double flowers 3 inches across.

Any of above varieties, except where noted, 3 for 90c.

NOTE: Orders from this page valued at \$3.00 or more will be sent postpaid. On orders under \$3.00, please add 35c if to be sent postpaid, to help defray expenses in handling and postage.



SPOON CHRYSANTHEMUMS

Large-Flowering Varieties

Largest, most showy of the late fall flowers, the ball-like bloom being 3 to 4 inches across. Should be planted in a protected location in good soil. For larger flowers allow only one bud to a stem. In full bloom by mid-October.

Mrs. H. E. Kidder. Elegant large yellow blooms with petals incurved.

Oconto. Pure white; petals incurved.

Rose Glory. Lavender-pink; petals incurved.

Any of above Large-flowering Mums, 3 for \$1.00

Choicest Garden Mums

Algonquin. A very hardy variety with healthy foliage and large, full golden yellow flowers. One of the earliest to bloom.

Barbara Cumming. Clear yellow, shading to orange-bronze toward the center; large, full flowers. August-November.

Early Bronze. Double; lively bronze-yellow. Dwarf. August-October.

Indian Summer. Glowing orange flowers 3 inches across; double. Erect and free flowering.

Judith Anderson. Clear buttercup-yellow flowers, nicely rounded. Button type, completely covering the plant. October.

Minnau. Large, very double, white flowers. Button type. Compact plant.

Murillo. Best shade of pink among the hardy Chrysanthemums.

Rose Glow. Lovely old-rose becoming opalescent rose; semi-double flowers 2 inches across in great profusion; delightfully cinnamon scented. Magnificent. 45c each; 3 for \$1.10.

Ruth Cumming. Rich bronze terra-cotta. October.

Snappy. Red with golden reverse; semi-double. October.

Tasiva. Lovely, large pure white blooms. Free-flowering. Early. Dwarf.

The Moor. Port-wine-red flowers, 3 inches across and double, making intensely brilliant garden display. Late September.

Any of above varieties, your selection, 3 for 90c.



THE MOOR

KING MIDAS

EMBER

ORDER BLANK

It is mutually agreed between the customer, whose name appears below and ourselves, that no substitutes shall be made, unless by permission accompanying order, that shipments travel at the risk and cost (except prepaid offers) of the purchaser, and that this order is given and accepted under the conditions of sale in our current catalog.
B. F. BARR NURSERIES.

Encl. -----

O. K.'d -----

Ackd. -----

Shipped -----

Via -----

Filled by -----

Please do not write
in above space

Name ----- Date -----

(Please prefix Mr., Mrs. or Miss and write plainly)

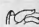
Street or R. D. -----

Town ----- County -----

Express or }
Frt. Office } ----- State -----

Forward by {
Mail.....
Express.....
Freight.....

May we ship by mail,
express or freight as
we may deem best,

 If out of variety ordered shall we substitute nearest variety of equal value? -----
or return money? -----

Quantity	List of Plants, Bulbs, Etc.	Size	Each	Total

(Use other side if necessary)

Late in the season it is well to indicate second choice in the event first selection is sold out

Amount of Order

Included for Parcel Post ..
10% of the amount to cover postage
(Except Postpaid offers)
Minimum charge 20c

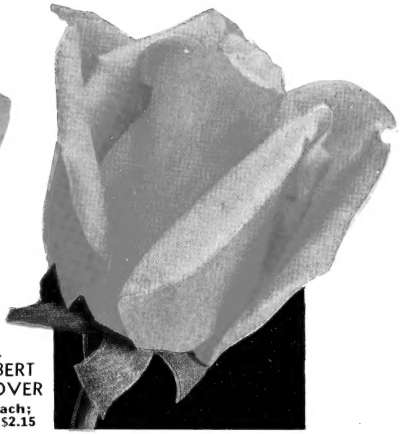
Total Amount Enclosed ...

\$		Cts.
\$		Cts.

Please use separate sheet of paper for asking questions or conveying messages)



© ECLIPSE. Pat. 172
\$1.25 each; 3 for \$3.15



PRES.
HERBERT
HOOVER
85c each;
3 for \$2.15



© COUNTESS VANDAL. Pat. 38
\$1.00 each; 3 for \$2.50

LANCASTER "RED ROSE CITY" DOZEN	
1 Christopher Stone. Scarlet-crimson.	\$1.00
2 Crimson Glory. Pat. 105. Deep vivid scarlet.	1.25
3 Eclipse. Pat. 172. Rich gold.	1.25
4 Editor McFarland. Deep pink.	.85
5 Etoile de Hollande. Crimson.	.85
6 Mme. Cochet-Cochet. Pat. 129. Coppery pink.	1.00
7 Mrs. Pierre S. du Pont. Golden yellow.	.85
8 Mrs. Sam McGredy. Scarlet-orange.	1.00
9 President Herbert Hoover. Multicolor.	.85
10 Rome Glory. Pat. 304. Cerise-red.	1.25
11 Sister Therese. Clear yellow.	1.00
12 Sterling. Pat. 21. Bright pink.	1.00
SPECIAL OFFER. \$10.00	

LANCASTER
"Red Rose City" Dozen

Through years of testing in various normal soils, the 12 varieties tested above have proved themselves eligible to be named in honor of Lancaster, the "Red Rose City." They are all superlatively healthy and vigorous in growth, hardy, and resistant to Rose ills, and should bloom from June until frost.



POINSETTIA
\$1.25 each; 3 for \$3.15



STERLING
Pat. 21.
\$1.00 each;
3 for \$2.50

Order Your
ROSE BUSHES
Now!
to Plant this Spring



MRS. PIERRE S. du PONT
85c each; 3 for \$2.15

**Save CASH and SHIPPING
Charges by Ordering at Once**

Dormant plants, both Standard and Patented varieties, will be delivered up to May 1, all shipping charges prepaid.

Potted plants, both Standard and Patented varieties, will be furnished after May 1, at no extra cost to prices quoted except express charges collect. If potted plants are wanted prepaid add 15c per plant to cover postage or Express.

REDUCED PRICES ON 3 OR MORE ROSES

Note a Saving of Over 16%

Any 3—85-c Roses	\$2.15
Any 3—\$1.00 Roses	2.50
Any 3—\$1.25 Roses	3.15
Any 3—\$1.50 Roses	3.75



CHRISTOPHER STONE
\$1.00 each; 3 for \$2.50



ROME GLORY. Pat. 304
\$1.25 each; 3 for \$3.15



MRS. SAM MCGREDDY
\$1.00 each; 3 for \$2.50

B. F. BARR • Florist and Nurseryman
SINCE 1893